

Seeing is Believing: Identity, Inequality, and the Impact of Television on the Hispanic Achievement Gap*

Andrew Kao[†]

February 2022

Abstract

Hispanics face the lowest high school and college completion rates out of all major ethnic and racial groups in the United States. In this paper, I investigate the impact of Spanish Language Television (SLTV) on Hispanic students in public schools using a spatial regression discontinuity arising from FCC regulation. I find that SLTV improves academic outcomes and narrows the Hispanic achievement gap, increasing SAT and ACT tests taken, enrollment in calculus, and AP exams passed. However, SLTV also causes more Hispanic students to be labelled 'limited English proficiency' and bullied on the basis of their ethnicity. I dig into the mechanism driving these contradictory results and find that Hispanic students perform better academically where SLTV programming focuses more on the Hispanic identity, but not when it focus more on role models or education itself. Furthermore, Hispanics with access to SLTV visit Hispanic branded establishments more frequently and counties with access to SLTV are more socially connected to Latin America. Collectively, these findings suggest that the effects of SLTV are driven by its effects on identity.

JEL Codes: I24, J15, L82, Z13.

Keywords: Hispanic, television, education, identity

*Many appreciated suggestions, critiques and encouragement were provided by Leonardo Bursztyn, Albert Chen, Lucas Cusimano, Andrés de Loera-Brust, Benjamin Enke, Victor Lima, Aakaash Rao, Jaya Wen, David Yang, and Kotaro Yoshida, seminar participants at EPoD, Harvard PE, and the University of Chicago Honors Thesis Workshop as well as Mark Colombo for technical advice on televisions.

[†]Harvard University. Email: andrewkao@fas.harvard.edu

1 Introduction

The Hispanic achievement gap is wide and persistent. Hispanics face the lowest high school and college completion rates out of all major ethnic and racial groups in the United States.¹ In this paper, I argue that Spanish Language Television (SLTV) has increased Hispanic educational attainment, and that moreover, these gains can be attributed to a heightened sense of a Hispanic identity.

Despite the rise of the internet, broadcast Spanish Language TV remains an important fixture in Hispanic households. 78% of Spanish-dominant households watch SLTV. In 2010, every single one of the top 10 shows watched by Hispanics were Spanish language programs (Pardo and Dreas, 2011). By investigating Spanish Language TV, I take a closer look at Hispanic communities and examine how identity can affect educational outcomes.

To identify the causal effect of SLTV, I follow Velez and Newman (2019) and exploit a spatial regression discontinuity arising from a Federal Communications Commission (FCC) regulation. This regulation grants federal protection of a TV station's broadcast signal to areas within a certain distance of a station's main antenna, with a sharp cutoff in enforcement beyond this distance. Thus, households and schools just inside a TV station's coverage contour should be observably similar to those just outside the contour, except for the presence of broadcast and satellite TV. This allows me to identify the causal effect of SLTV, given several features: (1) contours are mechanically decided by a formula involving geographical features and antenna strength, (2) contours are large and their boundaries tend to cut across small towns rather than urban centers (which fall squarely within contours), (3) SLTV stations were often built before this regulation was imposed, (4) demographic and other controls across the regression discontinuity are similar, and (5) Hispanics do not differentially migrate across contours, minimizing the possibility of selection. To further dispel concerns over potential confounds, I employ a difference-in-discontinuities design, comparing outcomes for Hispanic students against Asian students in schools with and without SLTV based on a 100 kilometer cutoff to SLTV coverage contours.²

I verify the relevance of this instrument's first stage by employing the difference-in-discontinuities design with the American Time Use Dataset. I find that Hispanics watch 10 minutes more TV within coverage contours. This is a plausible lower bound for the amount of extra Spanish Language TV watched if Hispanics do not substitute watching English programs with Spanish ones. I also show that Hispanics watch more TV with their children—Hispanic students, in other words.

¹See Tienda (2009). This Hispanic achievement gap encompasses a wide range of educational outcomes from kindergarten test scores to enrollment in graduate programs. Factors such as segregation (Cascio and Lewis, 2012), socioeconomic and ESL status (Carpenter, Ramirez and Severn, 2006), and immigration status (Reardon and Galindo, 2009) exacerbate the Hispanic achievement gap, whereas interventions such as providing free computers (Fairlie, 2012), de-tracking (Burris and Welner, 2005), or school choice, performance-based pay, and alternative teacher certification (Ladner and Burke, 2010) may help close it.

²I compare against Asian rather than white students because they are much less likely to identify as Hispanic.

Notably, non-Hispanics do not exhibit differential TV viewership across SLTV coverage contours.

Next, I utilize the Civil Rights Data Collection to analyze the effect of SLTV on Hispanic students in public schools. The white-Hispanic achievement gap is large: 36.6% for the number of SAT and ACTs taken, 15% for the number of calculus courses taken, and 17.8% for the number of APs passed. The Asian-Hispanic gap achievement gap is larger still. I find that SLTV improves academic outcomes across the board for Hispanics: compared to Asians, Hispanics with SLTV are 16% more likely to take the SAT or ACT, 27% more likely to enroll in calculus and higher math, and pass 8% more AP exams. These gains are also present in absolute terms, extend to a variety of other academic outcomes, and remain qualitatively similar under a variety of robustness tests, establishing that SLTV reduces the Hispanic achievement gap.

However, I also find that Hispanic students are more likely to be classified as having ‘limited English proficiency’ in the presence of SLTV despite greater general academic achievement, a likely outcome if these students shift from English to Spanish mastery due to SLTV. Furthermore, Hispanic students are also bullied more on the basis of their ethnicity in the presence of SLTV, consistent with a more salient identity that other students may target.

Given these findings, I investigate in greater depth the mechanisms that drive these gains in Hispanic performance. I use archive.org’s TV transcript database to classify the proportion of programs in each SLTV station that focus on the Hispanic identity. I show that a greater amount of SLTV programming focused on the Hispanic identity is associated with stronger Hispanic academic performance. However, a greater amount of programming focused on education or positive role models for children both have a null effect on Hispanic performance. This indicates that the content of these television programs matter, and that identity is a primary channel through which these gains are attained. Additionally, I use foot-traffic data from Safegraph to investigate engagement with Hispanic cultural experiences. Hispanics with SLTV are differentially more likely to visit Hispanic branded restaurants and recreation establishments. Conducting a placebo exercise, I find that Hispanics with SLTV are no more likely to visit Japanese, Brazilian, or Cajun and Creole establishments. This indicates a specific strengthening of the Hispanic identity versus a broader Latin American one. Finally, I also show that counties with access to SLTV are more socially connected to Latin America compared to the Brazil or the rest of the world. Collectively, these results suggest that identity is an important mechanism through which SLTV reduces inequality and the Hispanic achievement gap.

Literature Americans spend an average of three hours a day watching TV—more than any other activity but sleep! Accordingly, a large literature has examined the impact that television has on education. Prior work has frequently been correlational and findings remain conflicted: one line of research contends that TV is as a distraction which ‘rots’ the mind and harms student outcomes

(Zavodny, 2006),³ while another line of inquiry has found consistent null effects.⁴ Gentzkow and Shapiro (2008) are closest to this paper in using a difference-in-difference strategy to find that TV improves student test scores—particularly among nonwhite students and English language learners. I contribute to this literature by taking a quasi-experimental approach and examining mechanisms.

Others have studied the effect of television on Hispanic communities. Oberholzer-Gee and Waldfogel (2009) demonstrate that the presence of Spanish language local news increases Hispanic voter turnout, whereas Velez and Newman (2019) (who develop the instrument used in this paper) find that SLTV depresses Hispanic voter turnout. Trujillo and Paluck (2012) run an experiment measuring trust in the government and the census based on a scripted soap opera scene. I extend on this literature by moving beyond the political realm, arguing that the consequences of SLTV are large in educational settings, and also provide the first evidence on a mechanism through which SLTV operates: identity.

There is a growing literature that looks at how identity can influence behaviour. This has been studied through theory, in the lab, and the field.⁵ However, the underlying forces that construct identity (rather than simply triggering them via priming or other short-term interventions) are less well understood. Bisin et al. (2010), Atkin, Colson-Sihra and Shayo (2019), and Bazzi et al. (2019) encompass some recent studies on this topic, and all come to the conclusion that intergroup tensions or differences lead to a strengthening of identity. Alesina, Giuliano and Nunn (2013) take the long view and show how gender norms can be traced back to early agricultural practices. I contribute to this literature by proposing a media-based channel through which the Hispanic identity may be strengthened and influence action. This is closest to work such as Jensen and Oster (2009) and Gentzkow and Shapiro (2004), which establish a link between media & gender norms and media & anti-Americanism respectively.⁶

Finally, in the education and psychology literature, stereotype threat is a phenomenon that pinpoints minority identities as a root cause of achievement gaps (Appel and Kronberger (2012), Spencer, Logel and Davies (2016)). This has led to the rise of methods such as “situational disengagement” to avoid the negative stigma of identity (Nussbaum and Steele, 2007). This paper argues that a stronger sense of identity may not have uniformly negative consequences on Hispanic students, creating space for a more positive conception of identity.

³See also Aksoy and Link (2000), Hornik (1981), and Keith et al. (1986). This theory enjoys popular support (see Winn (2002) or Gentile (2004) which finds broad support for the theory among paediatricians). Huang and Lee (2010) and Nakamuro et al. (2015) use more sophisticated panel data approaches and also find negative (but smaller) effects.

⁴Gaddy (1986), Gortmaker et al. (1990), and Hu et al. (2020) take correlational approaches, while Munasib and Bhattacharya (2010) and Kureishi and Yoshida (2013) use self-reportedly weak instruments that may generate the null.

⁵See Akerlof and Kranton (2000), Benjamin, Choi and Strickland (2007), Benjamin, Choi and Fisher (2010), and Bursztyn et al. (2019), among others.

⁶Other related work on the impact of mass media on social outcomes include Ferrara, Chong and Duryea (2012), Kearney and Levine (2015), Olken (2009), DellaVigna and Kaplan (2007), Yanagizawa-Drott (2014), and Putnam (2001). For an overview, see DellaVigna and La Ferrara (2015).

Layout. Following this Introduction, Section 2 presents the data sources used. Section 3 describes the difference-in-discontinuities empirical strategy and establishes the first stage. Section 4 presents evidence that SLTV narrows the Hispanic achievement gap, with two notable exceptions in ‘Limited English Proficiency’ and ethnicity-based bullying. Section 5 presents evidence that an identity mechanism underlies these results using SLTV transcript and foot-traffic data. Finally, Section 6 concludes with a discussion of research questions opened by the preceding analysis.

2 Data

Coverage contours The central instrument used in this paper is the discontinuity in SLTV access across coverage contour boundaries introduced by FCC regulation. To build the coverage contours of SLTV stations in the United States, I collect a list of the callsigns for all SLTV stations from TMS Media, a large provider of data on TV, movies, and other media.⁷ There are 103 of these stations located across the United States. These callsigns are matched against data from the FCC’s OET Bulletin No. 69 and the FCC’s Consolidated DataBase System (CDBS) to directly obtain the coverage contour boundaries in 2015.⁸ Figure 1 presents an example of a single coverage contour, while Figure 2 displays a map of all SLTV contours in the United States.

Time use data I obtain time use data from the American Time Use Survey between 2003-2015 and construct the total amount of time individuals spent watching TV, time spent watching TV with children and parents, time spent on children’s education, and demographic variables. Individuals in the data are located at the county level—I classify a given county as falling within a SLTV contour coverage if at least 50% of its area does. 68,373 individuals in the sample live within 100 kilometers of the contour boundary. Table 1, Panel A presents summary statistics for this data.

Public school data I collect data on public schools from the US Department of Education’s Civil Rights Data Collection (CRDC) dataset in 2015. For anti-discrimination and transparency purposes, all public schools in the United States are required to report data to the CRDC on an annualized basis. This data contains information on various indicators of educational performance by demographic category, including SAT/ACT tests taken, calculus courses taken, AP tests passed, students classified under ‘Limited English Proficiency,’ students bullied on the basis of ethnicity or race, the number of teachers and students in the school, and more.⁹ School addresses are geocoded using ArcGIS and coded as receiving SLTV if they fall within a coverage contour. 83,004 schools across 11,065 school districts fall within 100 kilometers of the contour boundary. Figure 2

⁷A TV station is defined to be SLTV if at least one of the primary broadcasts languages is Spanish.

⁸2015 coverage contour data is used due to the ‘FCC Spectrum Repack’ that began in 2018 which altered the reception and coverage for a substantial number of stations. Coverage contours prior to 2015 were generally stable.

⁹Comprehensive variable descriptions are provided under Appendix A.

presents a map of all schools, Appendix Figure A.1 presents a map of schools within 100 KM of the boundary, and Table 1, Panel B presents summary statistics for this data.

Television transcript data To code the content of programs broadcasted by SLTV stations, I make use of archive.org’s television transcript database covering the years 2005-2015. Because transcript data is available at the television network level, I assign all affiliate stations data from their parent network.¹⁰ For each network in the database, I code the fraction of television programs whose transcripts contain keywords related to the mechanisms that I study: identity, education, and role models.¹¹ Table 1, Panel C presents summary statistics for this data.

Foot-traffic data I gather Safegraph foot-traffic data from 2019 to analyze whether Hispanics differentially visit Hispanic-branded establishments under the presence of SLTV. Safegraph uses location tracking data from mobile phones to compile comprehensive foot-traffic data to over 10 million points of interest around the world. I restrict the analysis to two commercial sectors where ethnic branding is common: food services (NAICS code 72) and arts, entertainment, and recreation (NAICS code 71). Restaurants and other food service establishments are tagged by Safegraph with the type of cuisine served, which I use to classify an establishment as Hispanic or not. Recreation establishments are not tagged, so I match establishment names with the same identity keywords used to classify the transcript data to code establishments as Hispanic. I repeat this for a number of placebo ethnicities: Japanese, Brazilian, and Cajun & Creole. Safegraph provides data on the number of visitors to each establishment at the census block group level. Thus, I use census data and the instrument to impute the number of Hispanics and non-Hispanics, with and without SLTV, who visit each establishment within 100 kilometers of a SLTV coverage contour.¹² There are 273,216 establishments included in my sample. Table 1, Panel D presents summary statistics for this data.

Other data Appendix A describes other data used in the paper. Briefly, they are IPUMS migration data at the origin county-destination county level from 2010-2015, used to test for selection via migration, the American Community Survey data for county level demographic controls, and the Facebook Social Connectedness Index. The appendix also describes in greater detail the data construction process for the datasets above.

¹⁰There are nine major Spanish Language TV networks present in the data: Telemundo, Univision, UniMás, Azteca América, PBS, Estrella TV, MundoMax, Enlace TBN, and Mega TV.

¹¹More sophisticated text analysis techniques such as NLP are not possible due to copyright law restricting direct access to the text corpus. Thus, only keyword searches are feasible. The specific set of keywords used are displayed in Appendix Table A.1 and the process for constructing this set is described under Appendix A.

¹²Given the potential selection concern of users whose data are covered by Safegraph, I also apply a Heckman correction based on sample moments from the Safegraph data to match the census data to correct the number of visitors in each category.

3 Empirical strategy

To isolate the causal effect of Spanish language television, I adapt the technique used in Velez and Newman (2019) and extend it from two counties to the entirety of the United States. Velez and Newman construct a spatial regression discontinuity based on FCC (Federal Communications Commission) regulation which determines the distance from a TV station for which the station's broadcast signal is protected from interference.

Digital and satellite TV stations operate by broadcasting signals from a central antenna, and the antenna's field strength at any given location is a mechanical product of several factors: the antenna's ERP (Effective Radiated Power, which is the amount of input power given to the antenna adjusted for antenna idiosyncrasies that may boost or attenuate its effective power), the antenna's HAAT (High Above Average Terrain), and the distance from the location to the antenna. This signal declines in strength with the square of distance, making it subject to interference and general loss of signal. When one gets far enough away from a TV station, this interference becomes widespread and meaningfully impedes TV viewership: the FCC completely repacked the spectrum between 2018-2020 to more efficiently allocate the frequencies on this spectrum and prevent interference.¹³ To safeguard TV signals, the FCC passed in 1997 a series of regulations to protect signals for commercial TV stations from interference. These established coverage contours for which service holds at 50% of locations 10% of the time, termed a noise-limited bounding contour, inside of which sufficiently strong interfering signals are banned.¹⁴ The blue contour line in Figure 1 presents an example of one such coverage contour.

This regulation creates a natural spatial regression discontinuity. Combined with the decaying strength of a TV signal due to distance, this cutoff in broadcast protection creates a split among households and schools just inside and outside of these coverage contours that should be ex ante comparable save for their access to broadcast TV. This is operationalized as a 100 kilometer cutoff from the coverage contour border in my baseline specifications. Appendix Figure A.1 displays a map of public schools within 100 KM of these contour borders. By studying Spanish Language TV in particular, I should be able to examine its causal effect on Hispanic communities, so long as the location of these contours are uncorrelated with any of the other determinants for the outcomes

¹³Interference is most common from other TV broadcasters, as with enough distance, even weak signals and signals from adjacent channels (both digital and analog) can cause major reception issues. Distance also aggravates common TV signal quality issues such as ghosting (the appearance of double images due to geographical obstacles/multiple signals) and exacerbates interference from other signals, including radio transmitters (whether commercial, CB, or amateur), and can even result in electrical sources (such as power lines or large motors) disrupting reception.

¹⁴The relevant sections of federal law are 47 C.F.R. 73.622, 73.623, and 74.704. The FCC's OET Bulletin No. 69 most clearly summarizes and provides guidance on the salient features in this law. These contour interference protection lines are constructed following the Longley-Rice methodology also adopted in 1997 and are termed $F(50,10)$ lines. In practice, this regulation is most frequently used to restrict new TV station allotments. There are also $F(50,90)$ lines which demarcate minimum field strength for digital TV service; these coverage contours are strict subsets of the interference contours and are not as suitable for a regression discontinuity as it is likely that people just outside of these contours are still able to access a television signal.

studied.

Given that these contours are purely determined by an algorithm and only dependent on physical variables like local elevation and antenna strength, these precise regulatory boundaries are located in more or less random locations. Coverage contours are large enough that they tend to cut across small towns rather than large cities—television networks have not constructed their antennae to be just large enough to only cover the most dense and populous areas.¹⁵

Another reassurance is that the interference protection regulation and the Longley-Rice methodology used to determine TV service coverage were only adopted in 1997, making it unlikely that stations were built or adapted in response to the policy. Univision, the largest owner of SLTV stations, was founded in 1955, and had built the vast majority of their television stations and antennas by 1997. Telemundo, the second largest owner of SLTV, was founded in 1984 and the stations it initially acquired were built in 1954. Like most SLTV networks, it primarily expanded through the acquisition of existing stations, rather than building out its own new ones.¹⁶ Nonetheless, one may still believe that SLTV stations target areas with more Hispanic people, or wealthier communities, or more populous areas, all of which are factors that could affect the outcomes of interest. Hence, I include explicit controls for these variables in regressions. The main specifications also include fixed effects at the county level or lower.

Finally, one may still be worried that unobserved variation across coverage contours could drive the observed results. Therefore, I follow the recent literature on difference-in-discontinuities (Casas-Arce and Saiz (2015), Grembi, Nannicini and Troiano (2016)) and employ a design that, in addition to the regression discontinuity, also compares outcomes for Hispanic students against Asian students. I compare against Asian rather than white students because they are much less likely to identify as Hispanic.¹⁷ Thus, any alternative explanation for these results would need to differentially affect only Hispanics across these coverage contours.

The instrument therefore consists of two variables interacted: first, an indicator for whether the observation falls within any SLTV station’s coverage contour boundary, and second, a Hispanic indicator. To ensure similarity between observations inside and outside the boundaries, only observations located within a distance of 100 KM of the boundary are kept. The main specification is:

$$y_{i,j} = \beta \mathbb{I}[InsideContour_{i,j}] \times \mathbb{I}[Hispanic_{i,j}] + \gamma_k + \delta X_i + \epsilon_{i,j}$$

¹⁵These urban centers fall squarely within the aforementioned $F(50,90)$ lines where minimum field strength must be guaranteed. This implies that network executives aiming to maximize profit, ratings, or audiences should not have the $F(50,10)$ interference lines used in this paper at the forefront of their decision calculus, as once a $F(50,90)$ line is constructed, the corresponding $F(50,10)$ line is mechanically determined as well.

¹⁶See <https://corporate.univision.com/timeline/#1950s> for information on Telemundo. See shorturl.at/gqMT7 for information on Univision. Links last accessed November 5, 2021.

¹⁷If SLTV does operate through an identity mechanism, then the ‘choice’ to self-report as white or Hispanic may even be endogenous. The achievement gap between Hispanics and Asians tends to be as large, if not larger, than the Hispanic-white achievement gap, making this a result of independent interest. Besides, whiteness need not be centered more.

where $y_{i,j}$ is an outcome for observation i (which may be an individual, school, or establishment) under demographic category $j \in \{\text{Hispanic, not Hispanic}\}$, γ_k is fixed effect for school district k (included when relevant), and X is a vector of controls for the observation. The main coefficient of interest is β , and in particular, the interaction term between the Inside Contour and Hispanic indicators.

Two potential concerns remain:

- *Can we guarantee that it is Hispanic people who watch SLTV?* If it were the case that non-Hispanic people were frequent viewers of SLTV, the main effects could also be attributed to non-Hispanics directly changing their behavior based on SLTV viewership. This could be the case if, for instance, white people treated Hispanics and Asians differently after having viewed SLTV, or Asian students performed worse in schools after watching SLTV. However, < 1% of TV programming watched by non-Hispanics is in Spanish, making such stories implausible (FCC, 2016).
- *How do we account for potential selection?* It is theoretically possible that Hispanic people move in response to these television coverage contour boundaries, and that the effects seen are therefore a result of Hispanics self-sorting. If true, this would be a remarkable result—people moving in large numbers for the sake of access to better television. Appendix B investigates Hispanic migration across SLTV contour boundaries using census migration data. I find that Hispanics do not differentially move into or out of counties with access to SLTV.

3.1 Evidence of a first stage: do Hispanics in SLTV coverage contours watch more television?

Over 85% of Hispanic households own a television. A further 85% of SLTV viewership occurs over satellite or broadcast television—important because coverage contours are only applicable for these types of television.¹⁸ Thus, a substantial fraction of Hispanics may be affected by the presence of these coverage contours.

I test for the amount of television watched across these contour boundaries with data from the American Time Use Survey. Figure 3 graphs the minutes of television watched against the distance to the contour boundary: it is clear that Hispanic television viewership increases inside the boundary while non-Hispanic viewership remains flat. However, there is not a sharp break in Hispanic viewership of all TV leading up to the border, but rather a continuous increase as one draws closer to the border—this provides an opportunity for a fuzzy regression discontinuity, combining the natural effect of distance to the signal with the effect of the FCC interference

¹⁸See FCC (2016) and De La Merced and Gelles (2014). This fraction of broadcast TV viewership is substantially larger than the national average, 24%.

protection.

Table 2, Panel A presents a regression following the main specification, keeping only residents living within 100 KM of the SLTV coverage contour. Hispanics watch an average of 10 minutes more television when within the contour, whereas the effect of the contour on non-Hispanics is insignificant. Panel B examines the effect of the contour on minutes of TV watched with one's children: this too increases for Hispanics by 3.5 minutes while not affecting viewership with children for non-Hispanics. Thus, Hispanics overall and Hispanic students (the children of individuals surveyed) both watch more TV within the coverage contour. But does more TV viewership translate into an increase in *Spanish Language* TV viewership? Unfortunately, I do not directly observe the amount of SLTV watched. However, if one reasonably assumes that English and Spanish Language TV are not complements,¹⁹ then these estimates would serve as a lower bound for the increase in SLTV watched by Hispanics.

Compared to other viewers of television, Hispanics are also uniquely likely to watch television in a social context rather than watching alone—this is partially driven by the fact that non-Hispanic households have 40% more TV sets per person than Hispanic ones (Coghill and McGinnis, 2018). This social aspect, wherein SLTV is watched with family and friends, may be one way in which identity is reinforced through television. Appendix Table A.2, Panel A shows that Hispanics differentially watch more TV with their parents when inside SLTV coverage contours. Appendix Table A.2, Panel B replicates the analysis in Table 2, Panel A, restricting the sample to only foreign-born residents. These people are less likely to have English mastery and may thus view more foreign-language TV. Accordingly, the panel reports even greater differential TV viewership among foreign-born Hispanics.

Finally one may be interested in what Hispanics spend *less* time doing as a result of watching more TV. Appendix Figure A.2 presents a breakdown of time spent per day for Hispanics with and without SLTV access and shows that slightly less time is spent on housework, although time spent on most daily activities remain similar. Appendix Figure A.3 shows the equivalent figure for non-Hispanics. Time use for non-Hispanics with and without SLTV access look similar.

4 The impact of Spanish language television on Hispanic educational performance

How big is the Hispanic achievement gap in public schools? Table A.3, columns 1 and 2 present the achievement gap between whites and Hispanics and Asians and Hispanics respectively. In almost every outcome of interest, Hispanics trail substantially behind their white and Asian peers.

¹⁹Though no direct economic research exists on the substitutability of English and Spanish Language TV, the Department of Justice's ruling on the Univision-HBC merger (68 Fed. Reg. at 66,857 (2003)) interprets these English vs. Spanish language networks as substitutable products.

Compared to white (Asian) students, Hispanic students take the SAT or ACT 36.6% (46.8%) less frequently, take calculus 15.0% (53.6%) less frequently, and pass 17.8% (72.3%) less AP examinations. These are startlingly large figures, making it imperative to find solutions that can help close the achievement gap.

To determine the effect of SLTV on the Hispanic achievement gap, I apply the main difference-in-discontinuity specification at the school-ethnicity level and compare differential outcomes between Hispanics and Asians while varying the presence of SLTV. I apply the inverse hyperbolic sine transform to all outcome variables in order to study the elasticity, or percentage difference, of these academic outcomes with respect to SLTV. Only schools within 100 KM of the coverage contour boundary are kept and standard errors are clustered at the school district level.

Table 3, Panel A presents results on the IHS transformed number of SAT and ACT tests taken, Panel B presents results on the IHS transformed number of calculus courses taken, and Panel C presents results on the IHS transformed number of AP exams passed.²⁰ All columns control for school district fixed effects and the number of Hispanic and Asian students in the school. Columns 2 and 3 add controls for the total number of students and teachers in the school, and column 3 adds controls for the school type (elementary, middle, and high school indicators). Results are statistically and economically significant. SLTV differentially increases the number of Hispanics taking the SAT or ACT by 16% (Panel A), the number of Hispanics taking calculus by 27% (Panel B), and the number of Hispanics passing an AP exam by 10% (Panel C). The degree to which this decreases the achievement gap is presented in Appendix Table A.3, Column 3.

One may naturally wonder whether Hispanic students only gain in relative terms to their peers. Appendix Table A.4 presents results utilizing only the regression discontinuity instead of the difference-in-discontinuities specification.²¹ Although the estimated coefficients are generally smaller, the effect of SLTV remains positive, indicating that Hispanic students gain in absolute as well as relative terms. These gains in academic performance are present in a variety of other academic outcomes: Appendix Table A.5 shows that SLTV reduces the Hispanic achievement gap in the number of gifted students (Panel A), advanced math courses taken (Panel B), biology courses taken (Panel C), physics courses taken (Panel D), and chemistry courses taken (Panel E). Appendix Table A.3 presents the size of the achievement gap and the degree to which SLTV ameliorates it for these auxiliary outcomes.

Robustness and ruling out alternative hypothesis The difference-in-discontinuities strategy should take care of most concerns regarding identification. I perform several robustness checks

²⁰The sample size changes across panels due to schools not reporting data when it is irrelevant. Not all schools offer the SAT/ACT test or calculus or AP exams. In order for missing data to bias results, selection would need to be correlated with the presence of coverage contours. It is unclear that schools have such an incentive to differentially manipulate reporting along this dimension.

²¹Due to the high degree of collinearity between school districts and the presence of SLTV, the school district fixed effects must be dropped from this specification.

and rule out potential alternative hypotheses that may explain the data in Appendix Table A.6. For each of these robustness checks, I replicate results for SAT and ACT tests as Panels X.X.1, calculus classes taken as Panels X.X.2, and AP exams passed as Panels X.X.3. Baseline results are presented in Panel A.1.

One may be concerned that schools near the outer bounds of the 100 kilometer cutoff may look quite different from one another. I narrow the sample distance cutoff to the contour boundary from 100 kilometers to 50 kilometers, 33 kilometers, and 10 kilometers and find that coefficients remain stable (see Panels A.2, A.3, and A.4). One may also be concerned about treatment effects very close to the coverage contour: students who attend a school 1 kilometer outside the contour may in fact live inside the contour, and the interference protection regulation may not be tightly enforced down to the last square foot. Thus, I keep only schools between 25 and 100 kilometers of the contour boundary and find qualitatively similar results (see Panel A.5).²² Given that television signals decrease with the square of distance from the main station, I additionally add controls for distance and distance squared and find that results are robust (see Panel A.6). Any variation along state or county levels that may ex ante affect school similarity are also absorbed by the school district fixed effects.

Given the interest in the Hispanic achievement gap and the presence of 0s in the data, it is natural to use the IHS transform on outcome variables. The results are also robust to using the $\log(x + 1)$ transform instead (see Panel B.1). If one is interested in the numerical difference rather than percentage change that SLTV induces, Panel B.2 presents results for raw counts and Panel B.3 presents results for the standardized count of the variables. Panel B.4 presents results using a Poisson estimator instead, another sensible specification due to count nature of the outcomes and the presence of 0s. In each case, results remain positive and significant. Similarly, though the main specification is at the school level, one may be interested in student-level outcomes. Panel C.1 weights observations by the size of schools whereas Panel C.2 weights observations by the number of students in the given demographic category to make the data representative at the student level; results remain largely unchanged. Panel C.3 adds school fixed effects to use within-school variation and finds the result robust.

The presence of bilingual stations that broadcast in both English and Spanish may alter the interpretation of results if change in Hispanic behavior is driven by these particular stations. There are 14 such stations in the data. Panel D.1 drops these stations and finds that coefficients remain stable.

Reverse causality could be a concern if TV executives strategically place TV stations to capture certain markets by the edges of the coverage contours. Panel E.1 controls for the station-level determinants of a TV signal's field strength (its antenna's effective radiated power, height above

²²The average high school (elementary school) student lives 9.60 (5.76) KM away from school. See <https://nhts.ornl.gov/briefs/Travel%20To%20School.pdf>

average terrain, radiation center above mean sea level, and presence of a directional antenna), which should account for the factors that a network could manipulate to increase or decrease coverage, and finds that results are robust.²³ Panel E.2 drops the 11 SLTV stations that were built after 1997 (when the FCC regulation was passed) as they may have been constructed with the interference coverage contour in mind; results remain qualitatively similar.

Selection *within* schools may also be a concern: perhaps the worst Hispanic students drop out more under the presence of SLTV, or the best Hispanic students move to private schools in areas without SLTV. I test for this in Appendix Table A.7 and find an insignificant difference in the number of Hispanic students retained across the SLTV boundary.

The main results also remain significant under different treatments of standard errors. Appendix Table A.6, Panels F.1 and F.2 correct for spatial autocorrelation, accounting for arbitrary spatial clusters and allowing for linear decay in the correlation structure (using the Bartlett kernel) respectively. Panel F.3 two-way clusters standard errors by school district and the parent TV network of the closest station. Panel F.4 clusters standard errors at the TV station level. Panel F.5 uses heteroskedasticity robust standard errors. Appendix Figure A.4 conducts a placebo exercise by randomly assigning schools with SLTV status and running the baseline specification 1000 times. The actual estimated treatment effects are much larger (and more precisely estimated) than the placebo treatment effects.

Finally, one might wonder how SLTV affects the white-Hispanic achievement gap. Panel G.1 presents results using white students as the omitted category instead of Asian students. Hispanics make up even more ground under this specification.

Taken as a whole, these results suggest that SLTV is a meaningful force that can improve Hispanic student performance in public schools and reduce the achievement gap. Nonetheless, several caveats must be made: first, although taking the SAT and ACT exams, taking higher math, and passing AP exams are all correlated with enrollment in college and higher earnings, I do not actually observe long-run outcomes for these Hispanic students. Thus, it may be the case that SLTV helps the youth but that these effects do not persist through adulthood.²⁴ Second, although Hispanic student outcomes in schools improve, this analysis does not speak to a variety of other negative consequences thought to be caused by TV, such as obesity or violence. It is possible that these effects coexist. Finally, these findings are focused on measuring the effect of *Spanish Language* TV, rather than on TV as a whole. It is worth bearing in mind that the literature typically finds null to negative effects of TV, which may lead the strong positive effects of SLTV to come as a shock to some. Academic brilliancy is not typically associated with the banal, mindless enjoyment

²³In practice, the local topography is also important for determining field strength. But if the mountain will not come to Muhammad, then Muhammad must go to the mountain. Thus, controlling for the above technical factors should be sufficient until the advent of terraforming.

²⁴Though it is in principle possible to employ this difference-in-discontinuity design to these long-run outcomes, I focus on immediate schooling outcomes in this paper and leave the long-run effect as space for potential future work.

of lazing on a couch before a flatscreen. So what might drive these results?

4.1 Identity within schools

I identify two outcomes in public schools that speak to the strength of one's Hispanic identity: (1) classification as a 'Limited English Proficient' (LEP) student, and (2) harassment or bullying on the basis of race, color, or national origin. Table 4 follows the difference-in-discontinuities specification used in Table 3 and examines the differential effect of SLTV on these outcomes.

Table 4, Panel A shows that Hispanics with access to SLTV are 30% more likely to be classified as a 'Limited English Proficient' (LEP) student when compared to their peers. This decrease in educational performance stands in contrast to all other academic outcomes studied thus far, suggesting that it is not a difference in general intelligence or work ethic that drives this result, but rather an idiosyncratic decline in English speaking ability. Though I do not directly observe the extent to which students speak Spanish, one parsimonious explanation for this finding is that watching SLTV causes students to attain greater mastery of Spanish, at the cost of their English skills.²⁵ To guard against the concern that this effect is driven by a purely *perceptual* change of Hispanic students by teachers and administrators, Appendix Table A.8 shows that the number of Hispanic students classified as disabled under IDEA (Individuals with Disabilities Education Act) does not differentially change with access to SLTV. This panel also serves as a general sanity check as SLTV (ideally) should not cause students to develop any disabilities.

Table 4, Panel B shows that Hispanics with access to SLTV are also differentially more likely to be harassed or bullied on the basis of their ethnicity. Though they are bullied more based on their Hispanic identity, Appendix Table A.8 shows that the number of Hispanic students bullied on the basis of their sex does not differentially change across the SLTV contour when compared to their peers. Any mechanism through which SLTV increases the propensity for Hispanic students to be bullied (such as students picking on strong academic performers) would need to reconcile the null result for bullying based on sex. My preferred explanation is that Hispanics watching SLTV make their ethnic identity more salient, making them a greater target for bullying along this specific dimension. This is corroborated by a substantial literature that has shown that an increase in the visibility of (non-majority) ethnicities is associated with them being bullied more.²⁶ Appendix Table A.9 shows that LEP classification and bullying based on ethnicity for Hispanics with SLTV also increase in absolute terms, not just in comparison to their Asian peers.

Thus, though it is impossible to rule out all other stories that may drive this set of results, few others can simultaneously explain the reversal in academic ability for English proficiency and the increased bullying on the basis of ethnicity (but not sex) among Hispanic students. A

²⁵This decline in English ability is a genuine cost that should be evaluated against the gains made in other academic areas. A full cost-benefit analysis is beyond the scope of this paper. However, the revealed preference of these students (and parents) suggest that they consider watching more SLTV worth the tradeoff.

²⁶See Scherr and Larson (2009) for a review of this literature.

strengthened Hispanic identity through SLTV, wherein Hispanics feel a stronger affinity towards Hispanic cultural practices, people, and countries of origin, neatly fits these facts.

5 Zeroing in on the identity mechanism

In this section, I examine the mechanisms through which SLTV might improve academic performance. Compared to English broadcasts, SLTV is more likely to contain content that is directly salient to a Hispanic person’s identity. This is not only because of its broadcast language, but also because of its content: roughly 20% of programming on SLTVs are telenovelas produced in Latin American countries, with a similar proportion of programming dedicated to other non-locally produced news and paid programming.²⁷ These programs can serve as a direct tie to a viewer’s country of origin, supplementing and strengthening their sense of self (Morales and Simelio, 2016).

5.1 The content of TV programs: narrowing down the mechanisms at play

I turn to the content of these SLTV programs in order to assess three potential mechanisms through which SLTV could increase educational performance: (1) SLTV programs strengthening the Hispanic identity, (2) SLTV programs stressing the importance of education, and (3) SLTV programs providing good role models for students. I infer the content of SLTV programs using keyword matching of terms related to each mechanism in the archive.org TV transcript database, described in Table A.1. To evaluate the strength of each mechanism, I modify the main specification by interacting the difference-in-discontinuity with the salience of each mechanism:

$$y_{i,j} = \beta \mathbb{I}[\text{InsideContour}_{i,j}] \times \mathbb{I}[\text{Hispanic}_{i,j}] \times \text{Mechanism}_s + \gamma_k + \delta X_i + \epsilon_{i,j}$$

where s indexes a given SLTV station, and Mechanism_s is the percentage of programs from the nearest station focused on a given mechanism. The triple interaction term between Inside Contour, Hispanic, and Mechanism yields the elasticity of the outcome with respect to the mechanism, and is thus the coefficient of interest.

Table 5 displays results for regressions following this specification. I focus first on column 1, which measures the strength of the identity mechanism. The triple interaction term is positive for the outcomes SATs and ACTs taken (Panel A), calculus courses taken (Panel B), and AP exams passed (Panel C). Panels A and B both show strong and significant effects, whereas Panel C is borderline insignificant—it suffers from power issues due to the low number of schools reporting this data and the demands of a triple difference specification. These results indicate that SLTV stations increase Hispanic academic performance more when they focus more on the Hispanic identity. Appendix Table A.10, Column 1, shows the effect of only the regression discontinuity

²⁷For more information, see FCC (2016).

interacted with the percentage of programs on identity, comparing outcomes only within Hispanic students, and finds that results remain largely similar. Thus, if these identity-focused shows impart a stronger sense of identity for Hispanics, then this would suggest that identity can be mobilized to close the Hispanic achievement gap.

Turning to the education mechanism, Table 5, Column 2 suggests that a greater emphasis on education in SLTV programs does not necessarily translate into stronger academic performance among Hispanics when compared to their peers. Although signs are positive for calculus taken (Panel B) and AP exams passed (Panel C), they are insignificant, and the sign on SATs and ACTs taken is negative.²⁸ Appendix Table A.10, Column 2, shows a similar effect when looking at Hispanics alone. Returning to the time use data, Appendix Table A.11 shows that parents do not spend any more time with their child on educational activities when they have access to SLTV, suggesting that they do not value education more because of SLTV. Taken together, these findings indicate that SLTV does not improve academic performance by raising the importance of education itself.

Table 5, Column 3 looks at the percentage of programs that contain good role models for students and children. As in the preceding case of education, the sign on the triple interaction term is mixed and never significant. Appendix Table A.10, Column 3 shows the interaction between the regression discontinuity and percentage of programs that contain good role models; again, no result is indicative of this mechanism improving student outcomes. It is worth noting that this does not mean that role models have no role to play in the eyes of the Hispanic youth—it may simply be that their presence in TV programs not explicitly targeted at students and children are more important, or that they may inspire Hispanics in paths outside of traditional academic success.

Finally, one should keep in mind that the selection of television programming itself may be endogenous. Network executives may decide to play more segments on education or with good role models for children if they broadcast to academically weaker Hispanic sections of the population, or they made decide to target academically stronger areas with more programming on identity.²⁹ Thus, these results, while suggestive, are not guaranteed to be causal. This does not change the interpretation of prior results in Section 4, given that choice of where (or whether) to broadcast certain programs only shifts the effect of SLTV *within* SLTV coverage contours, and the regression discontinuity continues to capture the local average treatment effect of SLTV.

²⁸This is potentially related to the fact that I cannot measure the valence with which education is treated by SLTV stations. One show may laud the merits of school, while another might paint it as a bore; both would appear in my data as a program focused on education.

²⁹Though if this were true, the 100 kilometer sample restriction would imply that executives decide their programming based on the peripheries of their coverage contours rather than the dense urban cores containing most of their viewership.

5.2 Foot-traffic: characterizing the ‘Hispanic’ identity

I now move out of the school setting and examine how SLTV could strengthen Hispanic identity using foot-traffic data from Safegraph. I follow a specification similar to that used in Section 5.1, except that i now indexes an establishment instead of a school, j is a demographic category within the set $\{\text{Hispanic, non-Hispanic}\} \times \{\text{SLTV, no SLTV}\}$, and s is an identity measure at the establishment level instead of at the TV station level. The outcome of interest is therefore the IHS transformed number of visitors from demographic category j to establishment i .

I first study foot-traffic to restaurants, which are tagged by Safegraph with the kind of cuisine that they serve. Table 6, Panel A.1 shows that Hispanics differentially visit Hispanic restaurants when they live in areas with SLTV. SLTV leads to an 80% increase in foot-traffic. Given this, one may wonder if Hispanics with SLTV simply visit more restaurants than their peers. Panel A.2 performs a placebo test with a country from the opposite side of the globe, showing that Hispanics with SLTV do not differentially visit Japanese restaurants. Panel A.3 performs an even sharper placebo test: Brazil is the rare country in South America where the predominant language is Portuguese and not Spanish, and is therefore not considered a Hispanic country. I find that Hispanics with SLTV do not differentially go to more Brazilian restaurants. Panel A.4 performs a similarly sharp placebo test: although some Cajuns and Creoles may speak Spanish or have Spanish heritage, their classification as Hispanic has been a matter of contention, with their geographical separation making them a particularly overlooked group.³⁰ Certainly, SLTV is not usually targeted towards this audience. I also find that Hispanics do not differentially visit Cajun and Creole restaurants.

Table 6, Panel B replicates the analysis using recreation and arts establishments instead of restaurants. Because Safegraph does not label these establishments, I use the same keyword matching process for TV transcripts to identify Hispanic (and other ethnic) establishments. Results are qualitatively similar, with Hispanics differentially visiting Hispanic branded places for recreation and the arts, but not for any of the placebos. Appendix Table A.12 replicates the results in Table 6 for the regression discontinuity interacted with establishment indicators of ethnicity among Hispanic visitors only; results look largely the same.

These results suggest that SLTV strengthens the Hispanic identity for Hispanic youths and adults alike, inducing them to eat and play more at Hispanic places. The Brazilian and Creole placebo exercises make the case that this Hispanic identity is both language and place dependent—perhaps even to a too exacting degree. Notably, this increased foot-traffic to explicitly Hispanic branded locations does not appear to cause a corresponding decline to locations branded by other ethnicities, suggesting that Hispanics do not become more insular despite their strengthened identity. These results may be driven by an advertising effect as Hispanics learn more about the nearby

³⁰See Schwegler (2010) for a discussion of this linguistic classification. Cajuns and Creoles are lumped together by Safegraph as one category, but this discussion is most relevant to Creoles.

Hispanic cultural venues, or more Hispanic-branded establishments opening. In either case, the greater engagement with the culture is still a means of expressing identity.

5.3 Discussing how the identity mechanism operates

Taking a step back, a strengthened Hispanic identity might lead to stronger academic outcomes for a variety of reasons: (1) SLTV may provide stronger connections to a country of origin, which may have social or intellectual benefits, (2) Hispanic students may derive greater self-confidence from seeing their compatriots on screen, (3) SLTV shows may serve as a basis for socialization and stronger within group ties in the Hispanic community, (4) SLTV may provide more relatable or intellectually stimulating content that sparks curiosity, (5) seeing countries of origin represented on may lead students to recognise their relative privilege and perceptually raise the value of the educational opportunities they've been provided, or (6) in some cases, SLTV may serve as a salient reminder of family and friends from 'home,' making transfers back seem more important. It is important to caveat that my analysis that cannot directly open the black box of how identity affects academics, so the possibilities above may all contribute to this effect in varying ways.

Although I cannot test each of these individual hypotheses, I conduct one final piece of analysis to see whether the first reason identified—stronger connections to a country of origin—is supported by the data. Table 7 examines the Facebook Social Connectedness Index between counties in the US and countries around the world. Panel A shows a diff-in-diff specification, comparing counties with and without SLTV coverage in their social connectedness to Latin America and the rest of the world, and demonstrates that SLTV coverage is associated with a greater increase in connectedness to Latin America. Panel B shows that SLTV leads to a greater increase in social connectedness to Latin America compared to Brazil. This supports the first hypothesis presented and suggests that ties to a country of origin could be beneficial.

Thus, I have presented four distinct strands of evidence that each suggest that SLTV strengthens the Hispanic identity: (1) Hispanic students are more likely to be classified as having limited English proficiency and are more likely to be bullied on the basis of their ethnicity when receiving SLTV, (2) Hispanic students perform better when local TV stations broadcast more content relating to identity, (3) Hispanics differentially frequent more Hispanic-branded locations when they have access to SLTV, and (4) that they are more socially connected to their countries of origin. Although no piece of evidence on its own is fully persuasive, collectively, they suggest that identity is a mechanism through which SLTV operates.

6 Conclusion

In this paper, I document that Spanish Language TV helps close the Hispanic achievement gap in public schools and provide evidence indicating that these gains in educational performance are

driven in part by an identity mechanism. However, I do not measure the long-run consequences of SLTV, naturally leading one to wonder how SLTV might affect Hispanic performance in higher education and in the labor force. I am also unable to track individual beliefs and attitudes: understanding how the identity mechanism operates and how it translates into better academic performance (is it self-confidence? better socialization? intellectual stimulation?) is therefore a critical question that remains unanswered.

Further, while I provide preliminary evidence ruling out the presence of some other potential mechanisms, the thrust of this paper is concerned with establishing the existence of an identity mechanism. Thus, I do not claim that it is the sole (or even necessarily the largest) mechanism at play. There remains space for future work to investigate the presence of other mechanisms through which SLTV influences behavior.³¹ As the discussion in Section 5.2 makes clear, the Hispanic identity is not monolithic. Smaller ethnic groups under the banner of the Hispanic identity may be overlooked and individuals from different countries of origin may engage with SLTV differently. Studying these heterogeneities may yield unique insight, just as focusing on Hispanics as a community in this paper has allowed me to uncover findings that a simple study of the broader American population would not have been able to.

By claiming that identity can lead to constructive outcomes, this paper also serves as a departure from much of the education literature that views identity through the lens of stereotype threats, negative self-fulfilling prophecies, and a fear of ‘acting white.’ Economists have found mixed results linking identity and individual performance.³² How can identity beyond SLTV be used in academic or labor force settings to improve the welfare of Hispanics? Can individual, classroom, or workplace level interventions focused on identity be as effective as SLTV, and what policy levers might achieve the same effect? Significant achievement gaps also exist along other dimensions, such as socioeconomic status, gender, and race. Can identity be mobilized to help those facing this set of structural barriers? How might this change based on the intersection of these factors? Many questions regarding the possibility of utilizing identity as a force for positive change remain, especially for those interested in economic and policy-oriented outcomes.

³¹For instance, some scholars believe that telenovelas valorize gang culture and misogyny and cause adolescents to become criminal, while others claim that telenovelas allow marginalized individuals to break through traditional gender norms. See Benavides (2009) for a comprehensive discussion of these issues, or La Pastina (2004) for an ethnographic look at how telenovelas and gender roles interact in rural Brazil.

³²See Akerlof and Kranton (2002) for an economic grounding of identity in schools, and Fryer Jr and Torelli (2010), Deming et al. (2014), and Gershenson et al. (2018) for some examples of how identity affects schooling outcomes.

References

- Akerlof, George A, and Rachel E Kranton. 2000. "Economics and identity." *The quarterly journal of economics*, 115(3): 715–753.
- Akerlof, George A, and Rachel E Kranton. 2002. "Identity and schooling: Some lessons for the economics of education." *Journal of economic literature*, 40(4): 1167–1201.
- Aksoy, Tevfik, and Charles R Link. 2000. "A panel analysis of student mathematics achievement in the US in the 1990s: does increasing the amount of time in learning activities affect math achievement?" *Economics of education review*, 19(3): 261–277.
- Alesina, Alberto, Paola Giuliano, and Nathan Nunn. 2013. "On the origins of gender roles: Women and the plough." *The quarterly journal of economics*, 128(2): 469–530.
- American Community Survey Sample Size and Data Quality. 2020a. "American Community Survey Sample Size and Data Quality." United States Census Bureau.
- AP Data – Archived Data 2015. 2015b. "AP Data – Archived Data 2015." College Board.
- Appel, Markus, and Nicole Kronberger. 2012. "Stereotypes and the achievement gap: Stereotype threat prior to test taking." *Educational Psychology Review*, 24(4): 609–635.
- AP Score Distributions. 2020b. "AP Score Distributions." College Board.
- Atkin, David, Eve Colson-Sihra, and Moses Shayo. 2019. "How Do We Choose Our Identity? A Revealed Preference Approach Using Food Consumption." National Bureau of Economic Research w25693, Cambridge, MA.
- Bailey, Michael, Rachel Cao, Theresa Kuchler, Johannes Stroebel, and Arlene Wong. 2018. "Social connectedness: Measurement, determinants, and effects." *Journal of Economic Perspectives*, 32(3): 259–80.
- Bazzi, Samuel, Arya Gaduh, Alexander Rothenberg, and Maisy Wong. 2019. "Unity in Diversity? How Intergroup Contact Can Foster Nation Building." National Bureau of Economic Research w25683, Cambridge, MA.
- Benavides, O Hugo. 2009. *Drugs, thugs, and divas: telenovelas and narco-dramas in Latin America*. University of Texas Press.
- Benjamin, Daniel, James Choi, and A. Joshua Strickland. 2007. "Social Identity and Preferences." National Bureau of Economic Research w13309, Cambridge, MA.
- Benjamin, Daniel, James Choi, and Geoffrey Fisher. 2010. "Religious Identity and Economic Behavior." National Bureau of Economic Research w15925, Cambridge, MA.
- Bisin, Alberto, Eleonora Patacchini, Thierry Verdier, and Yves Zenou. 2010. "Bend It Like Beckham: Ethnic Identity and Integration." National Bureau of Economic Research w16465, Cambridge, MA.
- Burris, Carol Corbett, and Kevin G Welner. 2005. "Closing the achievement gap by detracking." *Phi Delta Kappan*, 86(8): 594–598.
- Bursztyn, Leonardo, Stefano Fiorin, Daniel Gottlieb, and Martin Kanz. 2019. "Moral incentives in credit card debt repayment: evidence from a field experiment." *Journal of Political Economy*, 127(4): 1641–1683.
- Carpenter, Dick M, Al Ramirez, and Laura Severn. 2006. "Gap or gaps: Challenging the singular definition of the achievement gap." *Education and Urban Society*, 39(1): 113–127.
- Casas-Arce, Pablo, and Albert Saiz. 2015. "Women and power: unpopular, unwilling, or held back?" *Journal of political Economy*, 123(3): 641–669.
- Cascio, Elizabeth U, and Ethan G Lewis. 2012. "Cracks in the Melting Pot: Immigration, School Choice, and Segregation." *American Economic Journal: Economic Policy*, 4(3): 91–117.
- Coghill, Heather, and Chris McGinnis. 2018. "Tuning In to Hispanic Audiences." effectv.
- De La Merced, Michael, and David Gelles. 2014. "AT&T to Buy DirecTV for \$48.5 Billion in Move to Expand Clout." *The New York Times*.
- DellaVigna, S., and E. Kaplan. 2007. "The Fox News Effect: Media Bias and Voting." *The Quarterly Journal of Economics*, 122(3): 1187–1234.

- DellaVigna, Stefano, and Eliana La Ferrara.** 2015. "Economic and Social Impacts of the Media." In *Handbook of Media Economics*. Vol. 1, 723–768. Elsevier.
- Deming, David J, Justine S Hastings, Thomas J Kane, and Douglas O Staiger.** 2014. "School choice, school quality, and postsecondary attainment." *American Economic Review*, 104(3): 991–1013.
- Fairlie, Robert W.** 2012. "Academic achievement, technology and race: Experimental evidence." *Economics of Education Review*, 31(5): 663–679.
- FCC.** 2016. "Hispanic Television Study." *Office of Strategic Planning and Policy Analysis and Industry Analysis Division, Media Bureau.*
- Ferrara, Eliana La, Alberto Chong, and Suzanne Duryea.** 2012. "Soap Operas and Fertility: Evidence from Brazil." *American Economic Journal: Applied Economics*, 4(4): 1–31.
- Fryer Jr, Roland G, and Paul Torelli.** 2010. "An empirical analysis of 'acting white'." *Journal of Public Economics*, 94(5-6): 380–396.
- Gaddy, Gary D.** 1986. "Television's impact on high school achievement." *Public opinion quarterly*, 50(3): 340–359.
- Gentile, D. A.** 2004. "Well-Child Visits in the Video Age: Pediatricians and the American Academy of Pediatrics' Guidelines for Children's Media Use." *PEDIATRICS*, 114(5): 1235–1241.
- Gentzkow, Matthew A, and Jesse M Shapiro.** 2004. "Media, Education and Anti-Americanism in the Muslim World." *Journal of Economic Perspectives*, 18(3): 117–133.
- Gentzkow, Matthew, and Jesse M. Shapiro.** 2008. "Preschool Television Viewing and Adolescent Test Scores: Historical Evidence from the Coleman Study." *Quarterly Journal of Economics*, 123(1): 279–323.
- Gershenson, Seth, Cassandra MD Hart, Joshua Hyman, Constance Lindsay, and Nicholas W Papageorge.** 2018. "The long-run impacts of same-race teachers." National Bureau of Economic Research.
- Gortmaker, Steven L, Charles A Salter, Deborah K Walker, and William H Dietz Jr.** 1990. "The impact of television viewing on mental aptitude and achievement: A longitudinal study." *Public opinion quarterly*, 54(4): 594–604.
- Grembi, Veronica, Tommaso Nannicini, and Ugo Troiano.** 2016. "Do fiscal rules matter?" *American Economic Journal: Applied Economics*, 1–30.
- High School Benchmarks – 2015.** 2015a. "High School Benchmarks – 2015." National Student Clearinghouse Research Center.
- Hornik, Robert.** 1981. "Out-of-school television and schooling: Hypotheses and methods." *Review of Educational Research*, 51(2): 193–214.
- Huang, Fali, and Myoung-Jae Lee.** 2010. "Dynamic treatment effect analysis of TV effects on child cognitive development." *Journal of Applied Econometrics*, 25(3): 392–419.
- Hu, Bi Ying, Gregory Kirk Johnson, Timothy Teo, and Zhongling Wu.** 2020. "Relationship between screen time and Chinese children's cognitive and social development." *Journal of Research in Childhood Education*, 34(2): 183–207.
- Jensen, Robert, and Emily Oster.** 2009. "The Power of TV: Cable Television and Women's Status in India *." *Quarterly Journal of Economics*, 124(3): 1057–1094.
- Kearney, Melissa S., and Phillip B. Levine.** 2015. "Media Influences on Social Outcomes: The Impact of MTV's *16 and Pregnant* on Teen Childbearing." *American Economic Review*, 105(12): 3597–3632.
- Keith, Timothy Z, Thomas M Reimers, Paul G Fehrmann, Sheila M Pottebaum, and Linda W Aubey.** 1986. "Parental involvement, homework, and TV time: Direct and indirect effects on high school achievement." *Journal of educational psychology*, 78(5): 373.
- Kureishi, Wataru, and Keiko Yoshida.** 2013. "Does viewing television affect the academic performance of children?" *Social Science Japan Journal*, 16(1): 87–105.
- Ladner, Matthew, and Lindsey M Burke.** 2010. "Closing the Racial Achievement Gap: Learning from Florida's Reforms. Background. No. 2468." *Heritage Foundation.*
- La Pastina, Antonio C.** 2004. "Telenovela reception in rural Brazil: Gendered readings and sexual mores." *Critical Studies in Media Communication*, 21(2): 162–181.
- Master List of 2015 - 2016 CRDC Definitions.** 2016. "Master List of 2015 - 2016 CRDC Definitions." Civil Rights Data Collection.

- Morales, Fernando, and Nria Simelio.** 2016. "Television and identities: analysis of the consumption of 'telenovelas' by the Latin American community in Spain." *Identities*, 23(5): 591–609.
- Munasib, Abdul, and Samrat Bhattacharya.** 2010. "Is the 'Idiot's Box' raising idiocy? Early and middle childhood television watching and child cognitive outcome." *Economics of Education Review*, 29(5): 873–883.
- Nakamuro, Makiko, Tomohiko Inui, Wataru Senoh, and Takeshi Hiromatsu.** 2015. "Are television and video games really harmful for kids?" *Contemporary Economic Policy*, 33(1): 29–43.
- Nussbaum, A David, and Claude M Steele.** 2007. "Situational disengagement and persistence in the face of adversity." *Journal of experimental social psychology*, 43(1): 127–134.
- Oberholzer-Gee, Felix, and Joel Waldfogel.** 2009. "Media Markets and Localism: Does Local News en Espanol Boost Hispanic Voter Turnout?" *American Economic Review*, 99(5): 2120–2128.
- Olken, Benjamin A.** 2009. "Do Television and Radio Destroy Social Capital? Evidence from Indonesian Villages." *American Economic Journal: Applied Economics*, 1(4): 1–33.
- Pardo, Claudia, and Charles Dreas.** 2011. "Three Things You Thought You Knew About U.S. Hispanic's Engagement With Media...And Why You May Have Been Wrong." Nielson.
- Putnam, Robert D.** 2001. *Bowling alone: the collapse and revival of American community*. . 1. touchstone ed ed., New York, NY:Simon & Schuster. OCLC: 248630671.
- Reardon, Sean F, and Claudia Galindo.** 2009. "The Hispanic-White achievement gap in math and reading in the elementary grades." *American educational research journal*, 46(3): 853–891.
- Scherr, Tracey, and Jim Larson.** 2009. "Bullying dynamics associated with race, ethnicity, and immigration status." In *Handbook of bullying in schools: An international perspective*. 223–234.
- Schwegler, Armin.** 2010. "Pidgin and creole studies: Their interface with Hispanic and Lusophone linguistics." *Studies in Hispanic and Lusophone Linguistics*, 3(2): 431–482.
- Spencer, Steven J, Christine Logel, and Paul G Davies.** 2016. "Stereotype threat." *Annual review of psychology*, 67: 415–437.
- Tienda, Marta.** 2009. "Hispanicity and Educational Inequality: Risks, Opportunities and the Nation's Future."
- Trujillo, Matthew D., and Elizabeth Levy Paluck.** 2012. "The Devil Knows Best: Experimental Effects of a Televised Soap Opera on Latino Attitudes Toward Government and Support for the 2010 U.S. Census: Television Effects on Census Support." *Analyses of Social Issues and Public Policy*, 12(1): 113–132.
- Velez, Yamil Ricardo, and Benjamin J. Newman.** 2019. "Tuning In, Not Turning Out: Evaluating the Impact of Ethnic Television on Political Participation." *American Journal of Political Science*, 63(4): 808–823.
- Winn, Marie.** 2002. *The plug-in drug: television, computers, and family life*. . 25th anniversary ed., completely rev. and updated ed., New York:Penguin Books.
- Yanagizawa-Drott, David.** 2014. "Propaganda and Conflict: Evidence from the Rwandan Genocide*." *The Quarterly Journal of Economics*, 129(4): 1947–1994.
- Zavodny, Madeline.** 2006. "Does watching television rot your mind? Estimates of the effect on test scores." *Economics of Education Review*, 25(5): 565–573.

Figures and Tables

Figure 1: Coverage map for TV station WUVC-DT

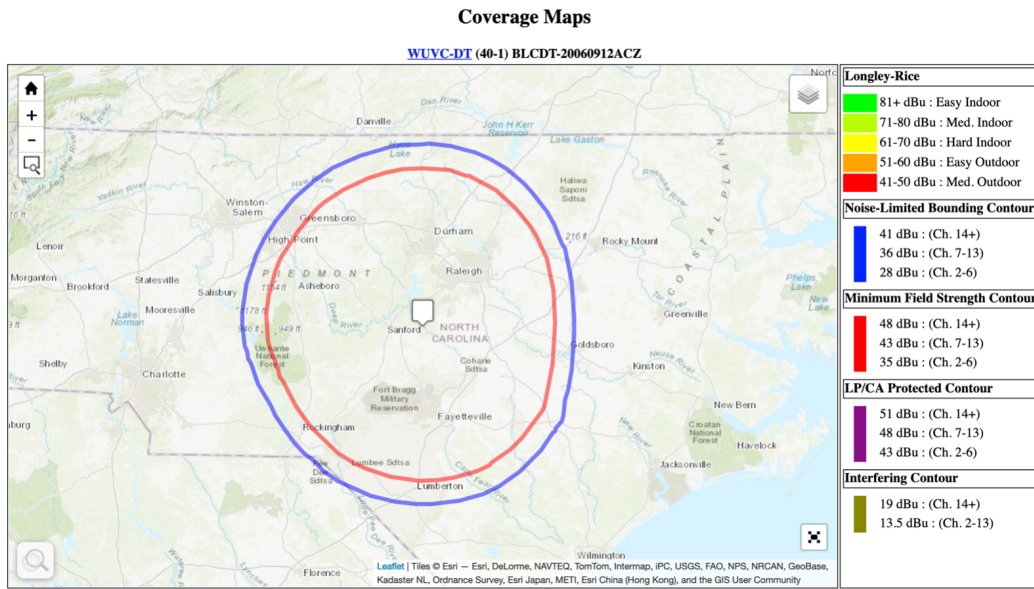


Figure 2: Map of coverage contours of Spanish Language TV stations and public schools in the US

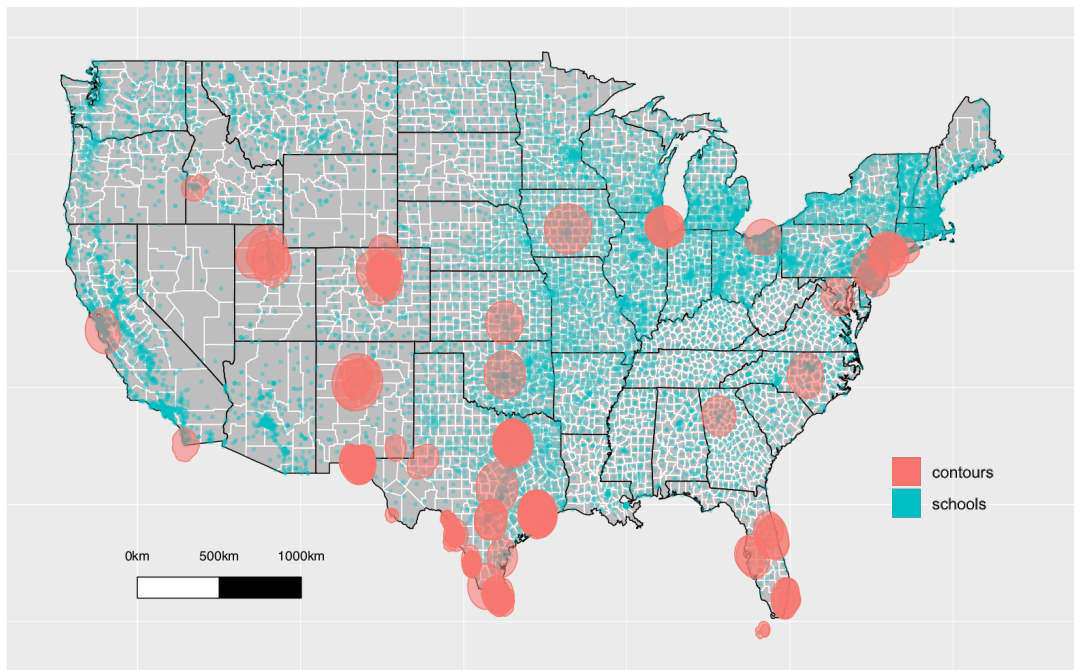
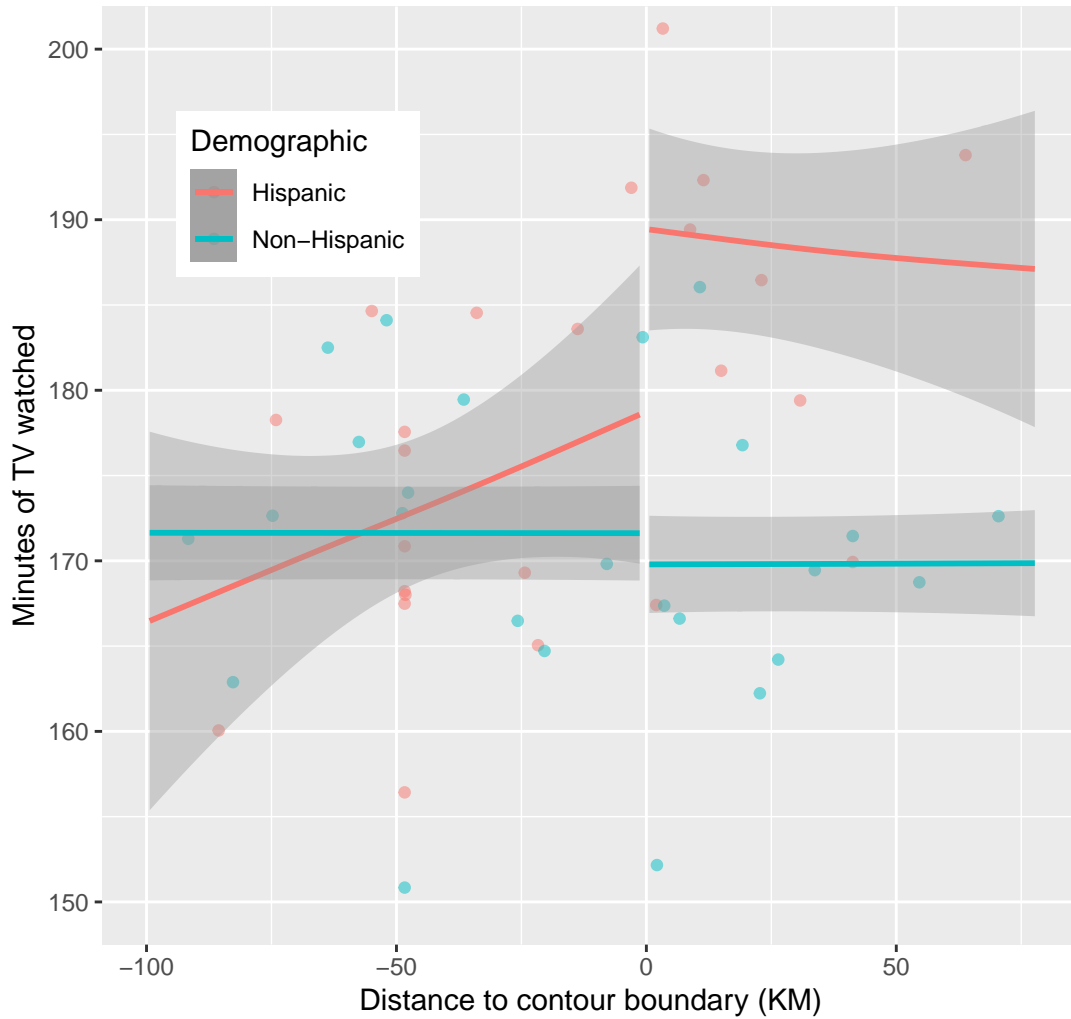


Figure 3: Minutes of TV watched across the coverage contour



Lowess smoothed (lines) and binscattered (points) minutes of television watched by distance to SLTV coverage contour boundary. Negative values indicate individuals outside of a contour (no SLTV). Hispanic viewership is in red, non-Hispanic viewership is in blue. Minutes of TV watched are residualized by individual level age, age², sex, and county level controls for log(income), log(population) and percent Hispanic.

Table 1: Summary statistics

	<i>All</i>	<i>No SLTV</i>	<i>SLTV</i>
	(1)	(2)	(3)
Panel A: American Time Use Survey (individual level)			
Hispanic indicator	0.251 (0.434)	0.254 (0.432)	0.248 (0.436)
Minutes of TV watched	170.846 (177.361)	172.140 (177.897)	169.649 (176.858)
TV watched with children	19.061 (63.577)	19.139 (63.481)	18.990 (63.666)
Observations	68,373	32,844	35,529
Panel B: Civil Rights Data Collection (school level)			
IHS(SAT/ACTs taken)	1.719 (1.926)	1.233 (1.515)	2.006 (2.079)
IHS(calculus taken)	1.907 (1.717)	1.197 (1.373)	1.760 (2.333)
IHS(APs passed)	4.081 (0.951)	3.564 (0.706)	4.174 (0.960)
IHS(limited English proficiency)	2.061 (1.943)	1.503 (1.660)	2.349 (2.015)
IHS(harassment based on ethnicity or race)	0.032 (0.229)	0.016 (0.163)	0.041 (0.257)
Log(income)	9.547 (0.303)	9.430 (0.200)	9.608 (0.328)
Log(population)	12.484 (1.576)	11.559 (1.471)	12.964 (1.405)
Fraction county Hispanic	0.107 (0.160)	0.037 (0.079)	0.143 (0.179)
# School teachers	39.591 (30.764)	32.684 (24.090)	43.169 (33.146)
# Hispanic students	164.343 (259.096)	68.500 (117.433)	214.011 (295.883)
# Total students	581.524 (482.595)	478.166 (383.924)	635.086 (518.467)
Observations	83,004	22,504	60,500
Panel C: archive.org TV transcripts (school level)			
% programs on identity	-	-	0.108 (0.017)
% programs on education	-	-	0.150 (0.028)
% programs with role models	-	-	0.005 (0.008)
Observations	-	-	60,500
Panel D: Safegraph foot traffic (establishment level)			
Restaurants — IHS(visitors)	2.673 (2.273)	-	-
Restaurants — Hispanic cuisine indicator	0.116 (0.321)	-	-
Observations	101,806	-	-
Recreation — IHS(visitors)	2.642 (2.259)	-	-
Recreation — Hispanic brand indicator	0.107 (0.103)	-	-
Observations	35,048	-	-

Notes: The table presents means (and standard deviations). Column 1 shows data for all observations. Columns 2 and 3 show data for the subsample without and with Spanish Language TV (SLTV) coverage, respectively. All panels only keep observations within 100 KM of the SLTV coverage contour boundary. Data in Panel A are at the individual level from the American Time Use Survey. Data in Panel B are at the school level from the Civil Rights Data Collection. Data in Panel C are at the school level from the archive.org TV transcript database—columns 1 and 2 are omitted because transcript data only applies where there is television. Data in Panel D are at the establishment level from the Safegraph traffic data—columns 2 and 3 are omitted for the location dummy because although visitor home location is used to instrument for the presence of TV, the location of the establishment is not.

Table 2: Effect of TV contour regulation on TV watched by ethnicity

	<i>Minutes of TV watched</i>			
	(1)	(2)	(3)	(4)
Panel A: Minutes of TV watched				
TV dummy \times Hispanic	10.822** (4.508)	9.050** (4.494)	11.060** (4.566)	10.362** (4.534)
TV dummy	-1.341 (3.532)	-0.1722 (3.188)	0.9478 (2.901)	2.039 (2.809)
Panel B: Minutes of TV watched with children				
TV dummy \times Hispanic	3.171** (1.490)	2.857* (1.517)	3.211** (1.479)	3.172** (1.490)
TV dummy	-0.0081 (0.7991)	0.2059 (0.6820)	0.4106 (0.7167)	0.4703 (0.7135)
Indiv. demographic	Yes	Yes	Yes	Yes
County log(income)	Yes	Yes	Yes	Yes
County % Hispanic	No	Yes	Yes	Yes
County log(pop.)	No	No	Yes	Yes
Foreign born \times Hispanic	No	No	No	Yes

Notes: The table presents coefficient estimates from regressions at the individual level, only keeping those living in a county within 100 KM of a Spanish language TV contour boundary. The dependent variable in Panel A is the total number of minutes of TV watched and in Panel B the number of minutes of TV watched with children. TV dummy is an indicator variable for a person living in a county with access to Spanish language television, which is interacted with an indicator for whether the individual is Hispanic. Columns 1-4 include demographic controls for sex, age, and age squared, as well as the mean log(income) of the county. Columns 2-4 control for the percentage of the county that is Hispanic. Columns 3-4 control for the county's log(population). Column 4 controls for whether the individual is foreign born interacted with a Hispanic dummy. Standard errors are clustered at the county level. *, **, and *** denote statistical significance at the 10%, 5%, and 1% levels, respectively.

Table 3: Effect of Spanish language TV on Hispanic vs. Asian academic achievement

	(1)	(2)	(3)
Panel A: IHS(SAT/ACTs taken)			
TV dummy \times Hispanic	0.1598*** (0.0264)	0.1598*** (0.0264)	0.1598*** (0.0264)
N	21,610	21,610	21,610
Panel B: IHS(calculus taken)			
TV dummy \times Hispanic	0.2718*** (0.0369)	0.2718*** (0.0369)	0.2718*** (0.0369)
N	11,460	11,460	11,460
Panel C: IHS(APs passed)			
TV dummy \times Hispanic	0.0964*** (0.0346)	0.0966*** (0.0353)	0.0972*** (0.0360)
N	3,757	3,757	3,757
School district FE	Yes	Yes	Yes
# Hispanic, Asian students	Yes	Yes	Yes
School size controls	No	Yes	Yes
School type controls	No	No	Yes

Notes: The table presents coefficient estimates from regressions at the school-ethnicity level, only keeping schools within 100 KM of a Spanish language TV contour boundary. The dependent variables are inverse hyperbolic sine transformed counts of the number of students taking the SAT or ACT in Panel A, the number of students enrolled in calculus in Panel B, and the number of Advanced Placement exams passed in Panel C. TV dummy is an indicator variable for a school with access to Spanish language television, which is interacted with an indicator for whether the demographic is Hispanic (the omitted group is Asians). Columns 1-3 control for the number of Hispanic and Asian students enrolled. Columns 2-3 control for the number of teachers and total number of students at the school. Column 3 controls for indicators denoting whether the school contains a primary, middle, and high school division. School district fixed effects are always included. Standard errors are clustered at the school district level. *, **, and *** denote statistical significance at the 10%, 5%, and 1% levels, respectively.

Table 4: Effect of Spanish language TV on Hispanic vs. Asian identity outcomes

	(1)	(2)	(3)
Panel A: IHS(limited English proficiency)			
TV dummy \times Hispanic	0.3042*** (0.0379)	0.3042*** (0.0379)	0.3042*** (0.0379)
N	83,004	83,004	83,004
Panel B: IHS(bullied based on ethnicity)			
TV dummy \times Hispanic	0.0015* (0.0009)	0.0015* (0.0009)	0.0015* (0.0009)
N	52,068	52,068	52,068
School district FE	Yes	Yes	Yes
# Hispanic, Asian students	Yes	Yes	Yes
School size controls	No	Yes	Yes
School type controls	No	No	Yes

Notes: The table presents coefficient estimates from regressions at the school-ethnicity level, only keeping schools within 100 KM of a Spanish language TV contour boundary. The dependent variables are inverse hyperbolic sine transformed counts of students classified as having limited English proficiency in Panel A and the number of students bullied on the basis of their ethnicity or race in Panel B. TV dummy is an indicator variable for a school with access to Spanish language television, which is interacted with an indicator for whether the demographic is Hispanic (the omitted group is Asians). Columns 1-3 control for the number of Hispanic and Asian students enrolled. Columns 2-3 control for the number of teachers and total number of students at the school. Column 3 controls for indicators denoting whether the school contains a primary, middle, and high school division. School district fixed effects are always included. Standard errors are clustered at the school district level. *, **, and *** denote statistical significance at the 10%, 5%, and 1% levels, respectively.

Table 5: Differential effect of Spanish language TV by program content on Hispanic vs. Asian academic achievement

	(1)	(2)	(3)
Panel A: IHS(SAT/ACTs taken)			
TV × Hispanic × % programs on identity	2.313** (0.943)		
TV × Hispanic × % programs on education		-0.516 (0.626)	
TV × Hispanic × % programs with role models			-2.085 (2.151)
N	21,610	21,610	21,610
Panel B: IHS(calculus taken)			
TV × Hispanic × % programs on identity	2.788*** (1.034)		
TV × Hispanic × % programs on education		0.829 (0.666)	
TV × Hispanic × % programs with role models			1.616 (2.463)
N	7,112	7,112	7,112
Panel C: IHS(APs passed)			
TV × Hispanic × % programs on identity	1.721 (1.280)		
TV × Hispanic × % programs on education		0.903 (0.922)	
TV × Hispanic × % programs with role models			-1.184 (2.989)
N	3,168	3,168	3,168
School district FE	Yes	Yes	Yes
# Hispanic, Asian students	Yes	Yes	Yes
School size controls	No	Yes	Yes
School type controls	No	No	Yes

Notes: The table presents coefficient estimates from regressions at the school-ethnicity level, only keeping schools within 100 KM of a Spanish language TV contour boundary. The dependent variables are inverse hyperbolic sine transformed counts of the number of students taking the SAT or ACT in Panel A, the number of students enrolled in calculus in Panel B, and the number of Advanced Placement exams passed in Panel C. % programs on identity, education, and role models are coded based on TV channel network transcripts. TV dummy is an indicator variable for a school with access to Spanish language television, which is interacted with an indicator for whether the demographic is Hispanic (the omitted group is Asians) and the % of programs on identity, education, and role models. Columns 1-3 control for the number of Hispanic and Asian students enrolled. Columns 2-3 control for the number of teachers and total number of students at the school. Column 3 controls for indicators denoting whether the school contains a primary, middle, and high school division. School district fixed effects are always included. Standard errors are clustered at the school district level. *, **, and *** denote statistical significance at the 10%, 5%, and 1% levels, respectively.

Table 6: Effect of Spanish language TV on Hispanic vs. non-Hispanic foot traffic

	<i>IHS(visitors to location)</i>			
	(1)	(2)	(3)	(4)
Panel A.1: Restaurants — Hispanic establishment indicator				
TV × Hispanic × Hispanic food	0.872*** (0.062)	0.872*** (0.062)	0.872*** (0.062)	0.872*** (0.062)
Panel A.2: Restaurants — Japanese establishment indicator				
TV × Hispanic × Japanese food	0.010 (0.067)	0.010 (0.067)	0.010 (0.067)	0.010 (0.067)
Panel A.3: Restaurants — Brazilian establishment indicator				
Hispanic × TV × Brazilian food	0.058 (0.241)	0.058 (0.241)	0.058 (0.241)	0.058 (0.241)
Panel A.4: Restaurants — Cajun and Creole establishment indicator				
TV × Hispanic × Cajun and Creole food	0.174 (0.196)	0.174 (0.196)	0.174 (0.196)	0.174 (0.196)
N	203,236	203,236	203,236	203,236
Panel B.1: Recreation — Hispanic establishment indicator				
TV × Hispanic × Hispanic brand	0.569*** (0.137)	0.569*** (0.137)	0.569*** (0.137)	0.569*** (0.137)
Panel B.2: Recreation — Japanese establishment indicator				
TV × Hispanic × Japanese brand	0.702 (0.528)	0.702 (0.528)	0.702 (0.528)	0.702 (0.528)
Panel B.3: Recreation — Brazilian establishment indicator				
Hispanic × TV × Brazilian brand	0.328 (0.598)	0.328 (0.598)	0.328 (0.599)	0.328 (0.610)
Panel B.4: Recreation — Cajun and Creole establishment indicator				
TV × Hispanic × Cajun and Creole brand	-0.187 (1.630)	-0.187 (1.630)	-0.187 (1.630)	-0.187 (1.631)
N	69,980	69,980	69,980	69,980
County log(income)	Yes	Yes	Yes	Yes
County % Hispanic	No	Yes	Yes	Yes
County log(pop.)	No	No	Yes	Yes
County FE	No	No	No	Yes
NAICS code FE	No	No	No	Yes

Notes: The table presents coefficient estimates from regressions at the establishment-visitor identity level, where a visitor identity is one of 4 categories (Hispanic or not × TV or not), only keeping locations within 100 KM of a Spanish language TV contour boundary. The dependent variable are inverse hyperbolic sine transformed counts of visitors to a given location from the identity group. Panel A restricts the universe of locations to food service establishments, while Panel B restricts to arts, entertainment, and recreation establishments. TV dummy is an indicator variable for visitors to the location with home access to Spanish language television, which is interacted with an indicator for whether the visitor group is Hispanic (the omitted group is non-Hispanics). Panels A.1 and B.1 interact these variables with an indicator for Hispanic establishments, Panels A.2 and B.2 interact these variables with an indicator for Japanese establishments, Panels A.3 and B.3 interact these variables with an indicator for Brazilian establishments, and Panels A.4 and B.4 interact these variables with an indicator for Cajun and Creole establishments. Columns 1-4 include controls for the mean log(income) of the county. Columns 2-4 control for the percentage of the county that is Hispanic. Columns 3-4 control for the county's log(population). Column 4 adds county and NAICS code fixed effects. Standard errors are clustered at the county level. *, **, and *** denote statistical significance at the 10%, 5%, and 1% levels, respectively.

Table 7: Effect of Spanish language TV on social connectedness to Latin America

	<i>Social Connectedness Index</i>			
	(1)	(2)	(3)	(4)
Panel A: Latin America vs. rest of world				
TV dummy \times Latin America	22.023*** (6.837)	22.023*** (6.838)	22.023*** (6.839)	
Panel B: Latin America vs. Brazil				
TV dummy \times Latin America	19.703*** (6.219)	19.703*** (6.220)	19.703*** (6.221)	
County log(income)	Yes	Yes	Yes	
County % Hispanic	No	Yes	Yes	
County log(pop.)	No	No	Yes	

Notes: The table presents coefficient estimates from regressions at the county-country group level, only keeping locations within 100 KM of a Spanish language TV contour boundary. The dependent variable is the Facebook Social Connectedness Index developed by Bailey et al. (2018). Panel A compares the connectedness between counties and Latin America vs. counties and the rest of the world, while Panel B compares the connectedness between counties and Latin America vs. counties and Brazil. Columns 1-3 include controls for the mean log(income) of the county. Columns 2-3 control for the percentage of the county that is Hispanic. Column 3 controls for the county's log(population). Standard errors are clustered at the state level. *, **, and *** denote statistical significance at the 10%, 5%, and 1% levels, respectively.

ONLINE APPENDIX

Appendix A Auxiliary data information

Migration data Data on migration comes from the 2011-2015 American Community Survey (ACS), which reports the number of people moving from each origin county to destination county (aggregated over the five years).¹ This sample also contains migration flows for the Hispanic population.

The migration data from the ACS is provided at the origin county-destination county level. I define a county as receiving SLTV if at least 50% of the area that the county encompasses is inside of the coverage contour.² There are 636 such counties (destination within 100 KM). The average origin county has 20 destination counties for which there is significant enough cross-county Hispanic migration that the ACS reports data for it.

Civil Rights Data Collection (CRDC) Below are descriptions of the academic outcomes as defined by the CRDC:

- **SAT/ACTs taken:** The SAT Reasoning test “is a nationally recognized assessment used to indicate college readiness. The SAT (formerly the Scholastic Aptitude Test) is sponsored by the College Board.” The ACT test “is a nationally recognized assessment used to indicate college readiness. The ACT is sponsored by ACT, Inc.” (CRDC (2016)) Scores for one of the two exams were almost universally required for admission to colleges in the United States in 2015.
- **Calculus taken:** Calculus “is a (college-preparatory) course with topics that include the study of derivatives, differentiation, integration, the definite and indefinite integral, and applications of calculus. Typically, students have previously attained knowledge of precalculus topics (some combination of trigonometry, elementary functions, analytic geometry, and math analysis).” (CRDC (2016)) It is frequently the most advanced mathematics course offered in US high schools.
- **AP programs passed:** The AP program is administered by the College Board, and defines a standardized college-level curriculum that is taught to high school students in AP Classes. In conjunction with AP Classes, AP Exams are national examinations which are designed to test mastery of material taught in AP classes. These exams are scored on a scale ranging from 1 to 5, with scores below a 3 marked as a failed exam. Even among the students who select

¹Historically, approximately 15% of the ACS migration data has been allocated, or imputed based on salient characteristics (United States Census Bureau (2020a)).

²Results are robust to different area cutoffs for a county to be considered inside the coverage contour.

into these classes (22% in 2015³), a substantial number of students who take these exams fail them - approximately 35% (College Board (2020b)).

- **Limited English Proficiency (LEP):** LEP students (also called English Learner students) are students that, as a result of their limited command over the English language, have difficulty participating in regular school activities.⁴ 9% of all public school students are considered LEP, and while students are placed into the program is at the discretion of individual school districts, all districts must provide language assistance services and have staff qualified to implement the LEP programs.⁵
- **Ethnicity-based bullying:** Harassment or bullying on the basis of race, color, or national origin “refers to intimidation or abusive behavior toward a student based on actual or perceived race, color, or national origin. Harassing conduct may take many forms, including verbal acts and name-calling, as well as non-verbal behavior, such as graphic and written statements, or conduct that is physically threatening, harmful or humiliating. The conduct can be carried out by school employees, other students, and non-employee third parties. Bullying on the basis of race, color, or national origin constitutes racial harassment.” (CRDC, (2016)) A similar definition exists for bullying based on sex.

These variables are all reported at demographic level within schools. Additional outcomes used from the CRDC include the number of gifted students enrolled in the school, the number of students taking advanced math courses (including trigonometry, analytic geometry, math analysis, probability and statistics, and precalculus), enrollment in college preparatory courses for biology, physics, and chemistry, the number of students retained from one year to the next, and the number of students classified under IDEA (served under the Individuals with Disabilities Education Act). Additional variables from the CRDC used in the analysis include the address of the school (for geocoding), the school district, the number of total, Hispanic, and Asian students, and indicators for whether the school contains a primary school, middle school, and high school. School non-compliance on reporting for mandatory data typically represents < 1% of total data.

archive.org transcript data Appendix Table A.1 presents the keywords within SLTV transcripts used to identify each mechanism. Panel A contains the list of word stubs for Hispanic countries.

³Data computed from number of high school graduates in 2015 (National Student Clearinghouse Research Center, (2015a)), and number of seniors who sat an AP exam in 2015. This is how the College Board currently tracks national AP participation (no comparable summary statistic was released in 2015) (College Board, (2015b))

⁴The specific definition of a LEP student depends on individual state regulation, but must also satisfy the criteria outlined under Title IX of the Elementary and Secondary Education Act). The most salient features of Title IX are that students must either not speak English as a native language or come from an environment where non-English languages are dominant, and also face substantial difficulty in engaging with others on the basis of their English ability.

⁵Department of Justice and Department of Education, “Ensuring English Learner Students Can Participate Meaningfully and Equally in Educational Programs” contains a full enumeration of the responsibilities school districts have. It further includes requirements such as ensuring equal access to various school programs etc.

Given that about half of all SLTV programming is locally produced or translations of US television content (such as news, the weather, or sports), these keywords are meant to capture the SLTV programming that is either produced abroad or focused on events abroad. Panel B contains a list of common words relating to education. This is meant to capture the extent to which a TV program focuses on education. Panel C contains a list of telenovelas (television dramas) aimed at children with good role models that aired before 2015.

Data is collected at the parent network level and values for each network is assigned to each affiliate TV station. Transcript data from the parent network is a reasonable proxy for local television content given that more than half the content in SLTV stations are either sourced internationally or produced for national consumption.

Safegraph foot-traffic data Restaurants in the Safegraph data are tagged with the kind of cuisine that they serve. I classify a restaurant as Hispanic-branded if any of the following tags apply to it: ‘Argentinean Food’, ‘Cuban Food’, ‘Latin American Food’, ‘Mexican Food’, ‘Peruvian Food’, ‘Spanish Food’, ‘Tapas’. ‘Japanese Food’, ‘Brazilian Food’, and ‘Cajun and Creole Food’ are the tags used for the respective branding.

Other non-restaurant establishments do not contain explicit tags (relating to nationality or otherwise). Thus, for internal consistency, I classify recreation establishments using the same keyword matching procedure as the TV transcript data. The same set of countries used for identity-based SLTV transcripts are used to identify Hispanic-branded establishments. For Japan and Brazil, these country name stubs are used. For the case of Cajun and Creole, the case-insensitive terms ‘cajun’, ‘creole’, ‘haiti’, and ‘jamaica’ are used (the latter two representing the two largest countries with substantial Creole speaking populations). A manual check of 100 restaurants and recreation establishments validates that these locations are correctly classified.

Facebook Social Connectedness Index The Facebook Social Connectedness Index, developed by Bailey et al. (2018), measures the intensity of social connectedness between counties in the United States and countries across the world in the year 2020. The Social Connectedness Index between county i and country j is defined as:

$$SocialConnectednessIndex_{i,j} = \frac{FB_Connections_{i,j}}{FB_Users_i \times FB_Users_j}$$

Using these indices, I then compute the Social Connectedness Index between each US county and (1) countries in Latin America, (2) the rest of the world, and (3) Brazil.

Geocoding Geocoding based on address names is performed by ArcGIS to obtain a particular latitude/longitude. The US Census Geocoder is used to validate these locations. This geocod-

ing procedure is successful over 99.9% of the time. Schools and other locations not successfully geocoded are dropped from the sample. For counties and other non-point locations, distances to the SLTV coverage contour boundary are computed using the minimum distance from the region to the boundary.

Appendix B Hispanic migration across SLTV boundaries

One concern for identification is that Hispanics may move based on access to SLTV, causing results to be driven by selection. I investigate whether this occurs using census data on migration. As mentioned in Appendix A, this migration data is provided at the origin county-destination county level. Given the relative size of a county, I define a county as receiving SLTV if at least 50% of its area is inside of the SLTV coverage contour.⁶ I present summary statistics for this sample in Table A.13.

Given the role that the distance between counties plays in migration distances, I modify the difference-in-discontinuities approach to this interaction. The main specification is also adapted slightly for this data at the origin county-destination county-ethnicity level. The first specification I examine is:

$$y_{o,d,j} = \beta \mathbb{I}[InsideContour_o] \times \mathbb{I}[Hispanic_j] \times Distance_{o,d} + \gamma_d + \delta X_o + \epsilon_{o,d,j}$$

where o indexes an origin county, d a destination county, and j is a demographic category (Hispanic or not). This first specification only keeps destination counties that are within 100 KM of the contour boundary. To test for whether Hispanics differentially cross the contour boundary when moving, I split the sample into destination counties inside & outside the contour and test for whether they differentially migrate to contours outside or into the contour respectively: therefore, the coefficient of interest is the interaction between $InsideContour_o$ and $Hispanic$ indicator. All specifications include destination fixed effects and controls at the origin county level.

Table A.14 presents this regression, where the outcome is the inverse hyperbolic sine transformed value of the number of migrants between the two counties. Panel A shows the sample where destination counties are inside the contour and finds that Hispanics do not differentially migrate to counties outside the contour. Panel B shows the sample where destination counties are outside the contour and finds that Hispanics do not differentially migrate to counties inside the contour. Coefficients are stable across columns, which add origin county level controls for $\log(\text{population})$, % county Hispanic, and mean $\log(\text{income})$ in each successive column.

Table A.15 changes the sample to those where the origin county are within 100 KM of the contour boundary. This specification flips the o, d subscripts, so that the specification is now:

$$y_{o,d,j} = \beta \mathbb{I}[InsideContour_d] \times \mathbb{I}[Hispanic_j] \times Distance_{o,d} + \gamma_o + \delta X_d + \epsilon_{o,d,j}$$

which can be interpreted similarly, except that we are now looking at migration to a given destination county conditional on viewing their origin county. Table A.15, Panel A shows the sample where origin counties are inside the contour and finds that Hispanics do not migrate in

⁶Results are robust to different area cutoffs for a county to be considered inside the coverage contour.

greater numbers across the contour. Panel B shows the sample where origin counties are outside the contour and finds that Hispanics do not differentially migrate in greater numbers across the contour. In fact, these results show a negative sign, suggesting that if anything, Hispanics are averse to moving across these boundaries. This is sufficient for me to make the argument that there is no selection, given that so long as there are not positive coefficients, there is no evidence of migration across contour borders.⁷ One might wonder why results are not symmetric to those displayed in Table A.14. This is due to the census data censoring counties for which there is a low number of migrants.

Tables A.16 and A.17 replicate the prior analysis, but now uses only the regression discontinuity interacted with the Hispanic indicator, and so no longer examines the differential amount of migration, but rather the absolute. The null result remains when examining the destination sample and, reassuringly, it does too in the origin sample as well too.

But even in cases where significant results are observed, the base rate of migration is sufficiently low that it should not drive results. In the origin county sample, an average of 84 Hispanic people are observed to move between each county-county pair (median: 25) over the five year period which the dataset spans. This also speaks to the magnitude of the coefficients observed, where the drop in 10 to 40% of migrants observed is plausible if it induces slightly fewer people to move.

These results combined indicate that movement across coverage contours is not a major threat to identification.

⁷One potential reason for aversion to moving across the contour boundary could be the tightness of Hispanic communities with SLTV if there is indeed an identity mechanism at play, or simply something in common to bond over.

Appendix C Additional figures and tables

Figure A.1: Map of coverage contours of Spanish Language TV stations and public schools within 100 KM of the contour boundary in the US

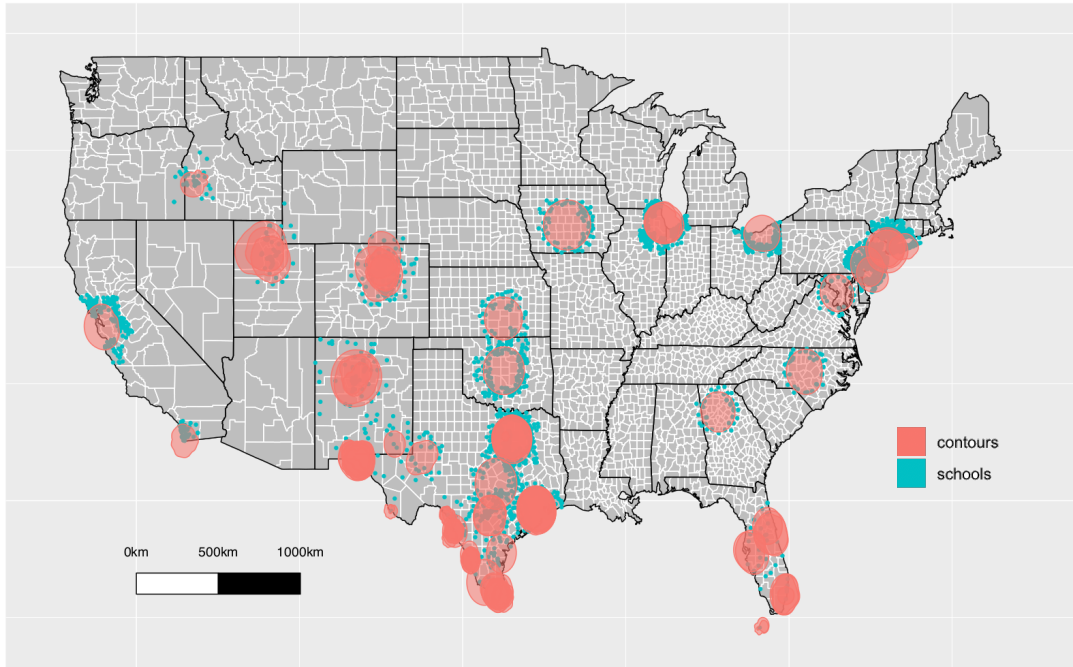


Figure A.2: Breakdown of daily time use by Hispanics with and without Spanish Language TV

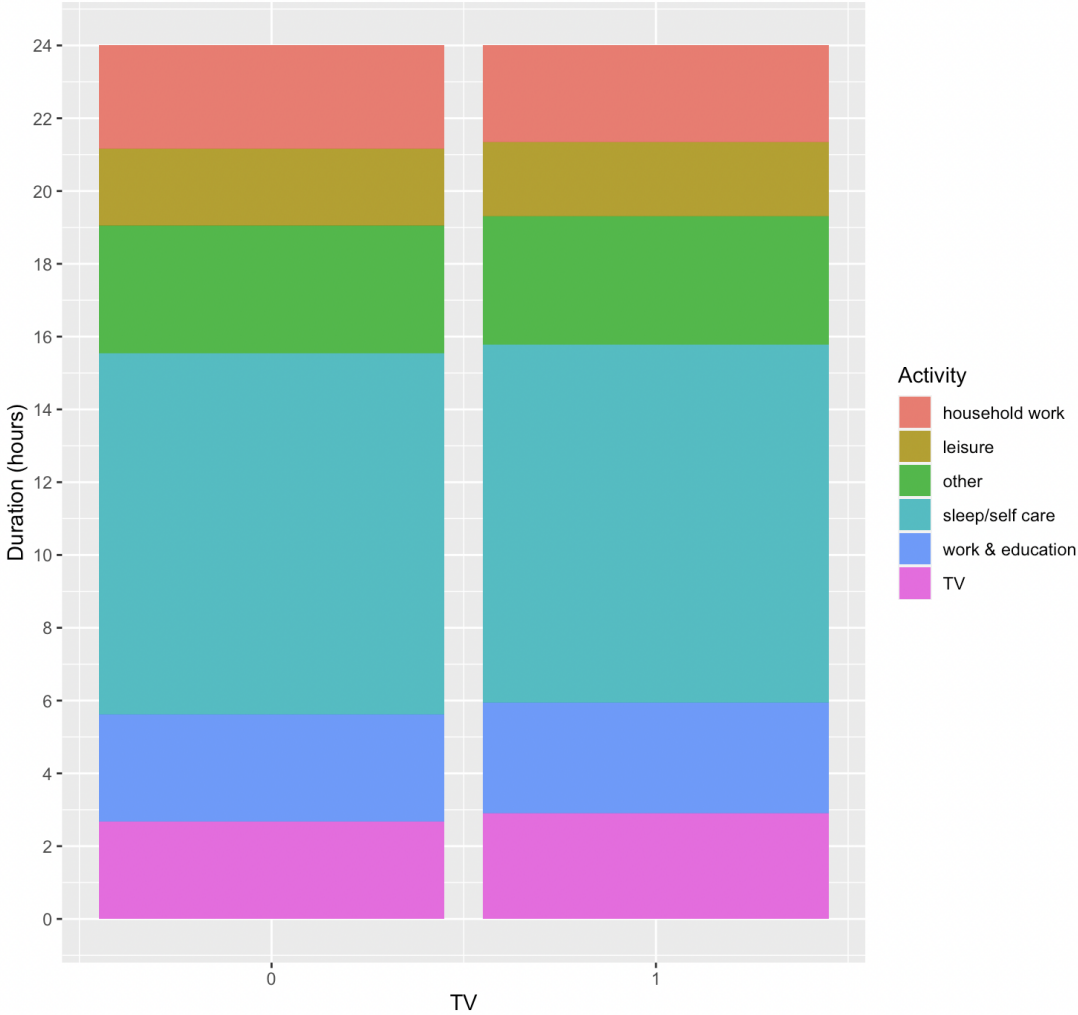


Figure A.3: Breakdown of daily time use by non-Hispanics with and without Spanish Language TV

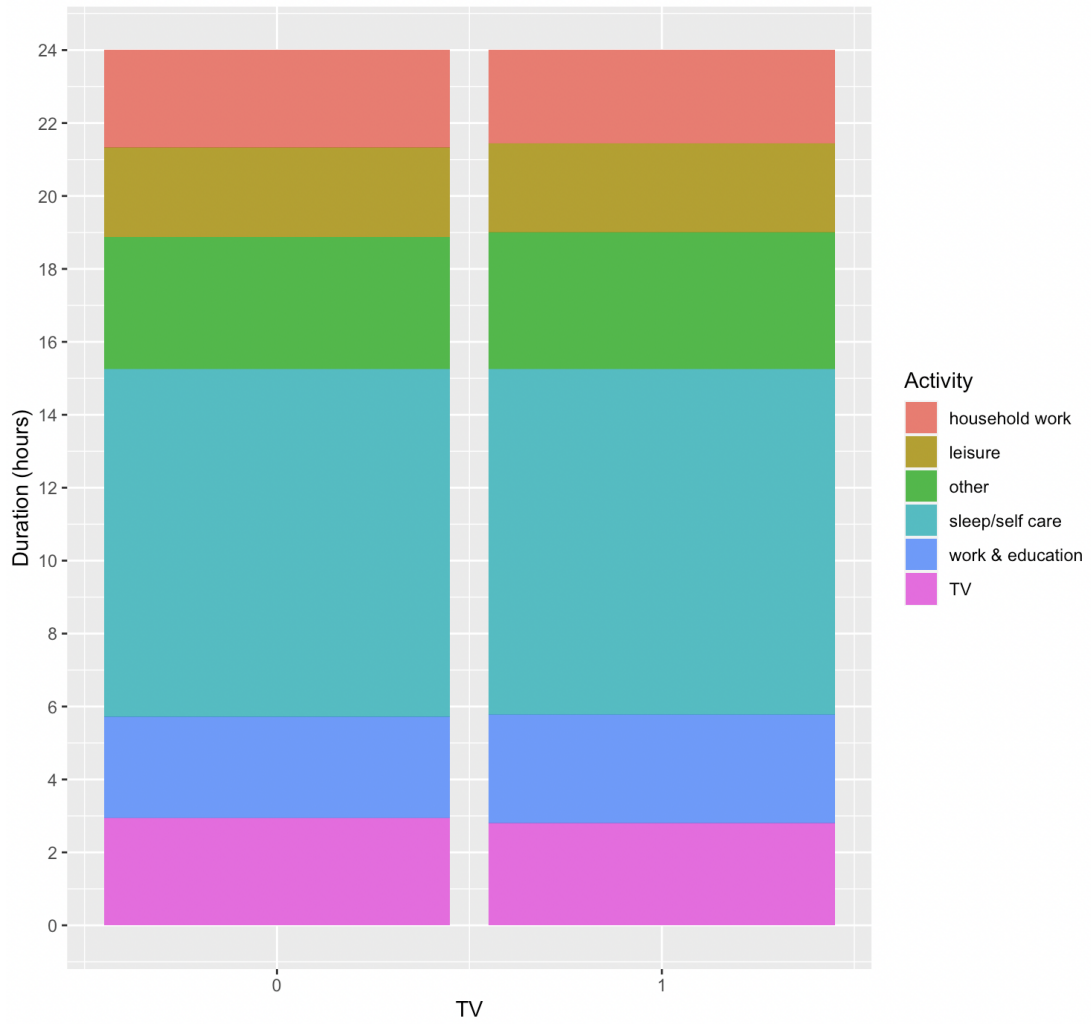
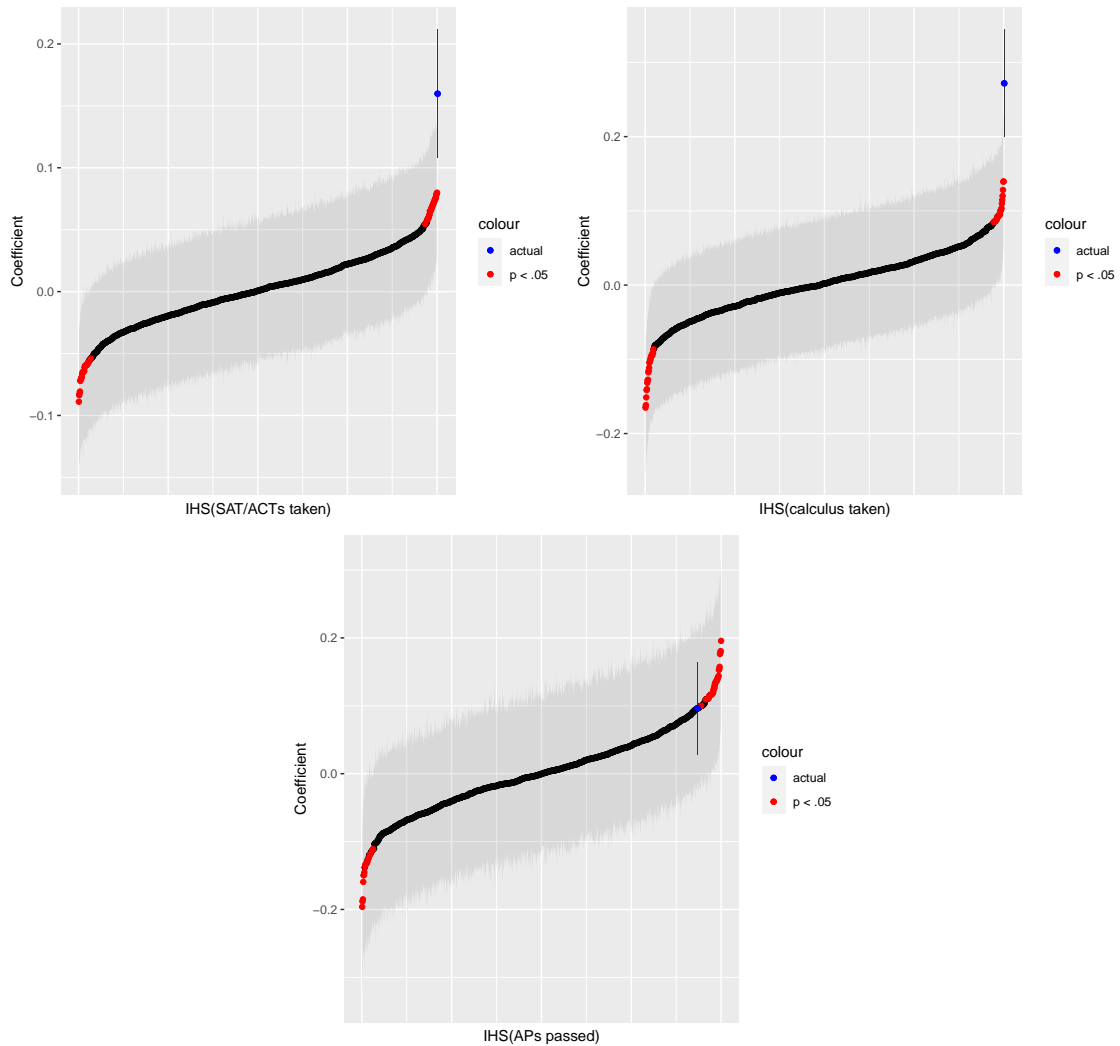


Figure A.4: Placebo exercise — randomly assigned indicators for SLTV



Note: This figure presents a placebo exercise that randomly assigns Spanish Language TV status to each school and runs the regression specification in Table 3 1000 times. Regressions significant at $p = 0.05$ are plotted in red, while the actual coefficient and CI is plotted in blue.

Table A.1: TV transcript keywords

<i>Panel A: Hispanic references</i>	mexic, bolivia, chile, argentin, venezuela, beliz, costa rica, salvador, guatemala hondur, nicaragua, panama, colombia, ecuador, guyana, paragua, peru urugu, cuba, dominican, puerto, latin
<i>Panel B: Education references</i>	educación , enseñanza, colegio, escuela, universidad, estudio, estudiar, estudiante alumna, alumno, profesora, profesor, maestro, maestra, clase, rango, grado aprender, mates, matematicas
<i>Panel C: Role model references</i>	Vivan los niños, Alegrijes y rebujos, Aventuras en El tiempo, amigos por siempre Misión S.O.S., Carrusel y El abuelo y Yo, El Juego de la Vida, De pocas pulgas luz Clarita, Serafín, 31 minutos, Bizbirije, Odisea Burbujas, El Tesoro del Saber Topo Gigio, Once Niñas y Niños

Notes: Television transcripts are classified as containing a reference name if any keyword (or program title in Panel C) in the panel is exactly matched within the word, ignoring case. Panel A contains the list of word stubs for Hispanic countries. Panel B contains a list of common words relating to education. Panel C contains a list of telenovelas with good role models for children that aired before 2015.

Table A.2: Effect of TV contour regulation on TV watched by ethnicity — parents and foreign born residents

	<i>Minutes of TV watched</i>			
	(1)	(2)	(3)	(4)
Panel A: TV watched with parents				
TV dummy × Hispanic	0.481*	0.507**	0.523**	0.522**
	(0.251)	(0.239)	(0.231)	(0.230)
TV dummy	-0.318**	-0.336**	-0.327**	-0.328**
	(0.144)	(0.140)	(0.138)	(0.139)
N	91,315	91,315	91,315	91,315
Panel B: TV watched by foreign born residents				
TV dummy × Hispanic	12.248*	11.822*	11.268	
	(6.955)	(6.957)	(6.989)	
TV dummy	0.910	0.950	2.695	
	(4.581)	(4.581)	(4.743)	
N	8,929	8,929	8,929	
Indiv. demographic	Yes	Yes	Yes	Yes
County log(income)	Yes	Yes	Yes	Yes
County % Hispanic	No	Yes	Yes	Yes
County log(pop.)	No	No	Yes	Yes
Foreign born × Hispanic	No	No	No	Yes

Notes: The table presents coefficient estimates from regressions at the individual level. Panel A uses the number of minutes of TV watched with parents as the outcome, while Panel B uses the total number of minutes of TTV watched and restricts the sample to those who were born in a foreign country. TV dummy is an indicator variable for a person living in a county with access to Spanish language television, which is interacted with an indicator for whether the individual is Hispanic. Columns 1-4 include individual demographic controls for sex, age, and age squared, as well as the mean log(income) of the county. Columns 2-4 control for the percentage of the county that is Hispanic. Columns 3-4 control for the county's log(population). Column 4 controls for whether the individual is foreign born interacted with a Hispanic dummy. Standard errors are clustered at the county level. *, **, and *** denote statistical significance at the 10%, 5%, and 1% levels, respectively.

Table A.3: Magnitude of the Hispanic achievement gap and SLTV effect size

	White-Hispanic gap	Asian-Hispanic gap	Gap after SLTV
	(1)	(2)	(3)
SAT/ACTs taken	36.6 %	46.8%	38.3%
Calculus taken	15.0%	53.6%	41.0%
APs passed	17.8%	72.3%	69.6%
Gifted students	56.6%	60.5%	51.0%
Advanced math taken	25.8%	45.3%	31.7%
Biology taken	-6.2%	5.6%	-18.9%
Physics taken	25.4%	43.7%	26.2%
Chemistry taken	9.9%	27.7%	6.7%

Notes: The table presents the achievement gap in percentage terms between whites and Hispanics in column 1, and between Asian and Hispanics in column 2. Column 3 presents the achievement gap using regression coefficients from Table 3, Column 1 for SAT/ACTs taken, calculus taken, and APs passed, and coefficients from Appendix Table A.5 for the remaining outcomes.

Table A.4: Effect of Spanish language TV on Hispanic academic achievement

	(1)	(2)	(3)
<hr/> <hr/> Panel A: IHS(Hispanic SAT/ACTs taken)			
TV dummy	0.036*** (0.013)	0.038*** (0.012)	0.034*** (0.012)
N	21,610	21,610	21,610
<hr/> <hr/> Panel B: IHS(Hispanic calculus taken)			
TV dummy	0.068*** (0.012)	0.076*** (0.012)	0.075*** (0.011)
N	11,460	11,460	11,460
<hr/> <hr/> Panel C: IHS(Hispanic APs passed)			
TV dummy	0.038*** (0.009)	0.048*** (0.009)	0.047*** (0.009)
N	3,757	3,757	3,757
County controls	Yes	Yes	Yes
School size controls	No	Yes	Yes
School type controls	No	No	Yes

Notes: The table presents coefficient estimates from regressions at the school level, only keeping schools within 100 KM of a Spanish language TV contour boundary. The dependent variable are inverse hyperbolic sine transformed counts of the number of Hispanic students taking the SAT or ACT in Panel A, the number of Hispanic students enrolled in calculus in Panel B, and the number of Advanced Placement tests passed by Hispanic students in Panel C. TV dummy is an indicator variable for a school with access to Spanish language television. Table 3 Columns 1-3 include county level controls for log(income), log(population), and percentage of the county that is Hispanic, as well as school level controls for the number of Hispanic and Asian students enrolled. Columns 2-3 control for the number of teachers and total number of students at the school. Column 3 controls for indicators denoting whether the school contains a primary, middle, and high school division. School district fixed effects are always included. Standard errors are robust. *, **, and *** denote statistical significance at the 10%, 5%, and 1% levels, respectively.

Table A.5: Effect of Spanish language TV on Hispanic vs. Asian academic achievement

	(1)	(2)	(3)
Panel A: IHS(gifted students)			
TV dummy \times Hispanic	0.2389*** (0.0284)	0.2389*** (0.0284)	0.2389*** (0.0284)
N	52,130	52,130	52,130
Panel B: IHS(advanced math courses)			
TV dummy \times Hispanic	0.2501*** (0.0362)	0.2501*** (0.0362)	0.2501*** (0.0362)
N	14,354	14,354	14,354
Panel C: IHS(biology courses)			
TV dummy \times Hispanic	0.2596*** (0.0272)	0.2596*** (0.0272)	0.2596*** (0.0272)
N	19,008	19,008	19,008
Panel D: IHS(physics courses)			
TV dummy \times Hispanic	0.3114*** (0.0345)	0.3114*** (0.0345)	0.3114*** (0.0345)
N	13,952	13,952	13,952
Panel E: IHS(chemistry courses)			
TV dummy \times Hispanic	0.2896*** (0.0273)	0.2896*** (0.0273)	0.2896*** (0.0273)
N	16,472	16,472	16,472
School district FE	Yes	Yes	Yes
# Hispanic, Asian students	Yes	Yes	Yes
School size controls	No	Yes	Yes
School type controls	No	No	Yes

Notes: The table presents coefficient estimates from regressions at the school-ethnicity level, only keeping schools within 100 KM of a Spanish language TV contour boundary. The dependent variable are inverse hyperbolic sine transformed counts of the number of gifted students in Panel A, the number of students enrolled in an advanced math course in Panel B, the number of students enrolled in a biology course in Panel C, the number of students enrolled in a physics course in Panel D, and the number of students enrolled in a chemistry course in Panel E. TV dummy is an indicator variable for a school with access to Spanish language television, which is interacted with an indicator for whether the demographic is Hispanic (the omitted group are Asians). Columns 1-3 control for the number of Hispanic and Asian students enrolled. Columns 2-3 control for the number of teachers and total number of students at the school. Column 3 controls for indicators denoting whether the school contains a primary, middle, and high school division. School district fixed effects are always included. Standard errors are clustered at the state level. *, **, and *** denote statistical significance at the 10%, 5%, and 1% levels, respectively.

Table A.6: Effect of Spanish language TV on Hispanic vs. Asian academic achievement: robustness and evaluating alternative hypotheses

	(1)	(2)	(3)
Panel A.1.1: Baseline — IHS(SAT/ACTs taken)			
TV dummy × Hispanic	0.1598*** (0.0264)	0.1598*** (0.0264)	0.1598*** (0.0264)
Panel A.1.2: Baseline — IHS(calculus taken)			
TV dummy × Hispanic	0.2718*** (0.0369)	0.2718*** (0.0369)	0.2718*** (0.0369)
Panel A.1.3: Baseline — IHS(APs passed)			
TV dummy × Hispanic	0.0964*** (0.0346)	0.0966*** (0.0353)	0.0972*** (0.0360)
Panel A.2.1: Within 50 KM of contour boundary IHS(SAT/ACTs taken)			
TV dummy × Hispanic	0.1481*** (0.0251)	0.1481*** (0.0252)	0.1481*** (0.0252)
Panel A.2.2: Within 50 KM of contour boundary IHS(calculus taken)			
TV dummy × Hispanic	0.2756*** (0.0338)	0.2756*** (0.0338)	0.2756*** (0.0338)
Panel A.2.3: Within 50 KM of contour boundary IHS(APs passed)			
TV dummy × Hispanic	0.1039*** (0.0398)	0.1050*** (0.0403)	0.1056*** (0.0408)
Panel A.3.1: Within 33 KM of contour boundary IHS(SAT/ACTs taken)			
TV dummy × Hispanic	0.1326*** (0.0260)	0.1326*** (0.0260)	0.1326*** (0.0260)
Panel A.3.2: Within 33 KM of contour boundary IHS(calculus taken)			
TV dummy × Hispanic	0.2625*** (0.0393)	0.2625*** (0.0393)	0.2625*** (0.0393)
Panel A.3.3: Within 33 KM of contour boundary			

IHS(APs passed)			
TV dummy × Hispanic	0.1257*** (0.0459)	0.1285*** (0.0467)	0.1295*** (0.0475)
Panel A.4.1: Within 10 KM of contour boundary IHS(SAT/ACTs taken)			
TV dummy × Hispanic	0.0751** (0.0320)	0.0751** (0.0320)	0.0751** (0.0320)
Panel A.4.2: Within 10 KM of contour boundary IHS(calculus taken)			
TV dummy × Hispanic	0.2219*** (0.0380)	0.2219*** (0.0381)	0.2219*** (0.0381)
Panel A.4.3: Within 10 KM of contour boundary IHS(APs passed)			
TV dummy × Hispanic	0.0471 (0.0440)	0.0478 (0.0438)	0.0497 (0.0435)
Panel A.5.1: Between 25-100 KM of contour boundary IHS(SAT/ACTs taken)			
TV dummy × Hispanic	0.2195*** (0.0328)	0.2195*** (0.0328)	0.2195*** (0.0328)
Panel A.5.2: Between 25-100 KM of contour boundary IHS(calculus taken)			
TV dummy × Hispanic	0.3213*** (0.0443)	0.3213*** (0.0443)	0.3213*** (0.0443)
Panel A.5.3: Between 25-100 KM of contour boundary IHS(APs passed)			
TV dummy × Hispanic	0.0807** (0.0383)	0.0805** (0.0384)	0.0819** (0.0386)
Panel A.6.1: Control for distance, distance ² IHS(SAT/ACTs taken)			
TV dummy × Hispanic	0.1598*** (0.0210)	0.1598*** (0.0210)	0.1598*** (0.0210)
Panel A.6.2: Control for distance, distance ² IHS(calculus taken)			
TV dummy × Hispanic	0.2718*** (0.0277)	0.2718*** (0.0277)	0.2718*** (0.0277)

Panel A.6.3: Control for distance, distance ² IHS(APs passed)			
TV dummy × Hispanic	0.0962*** (0.0287)	0.0961*** (0.0289)	0.0967*** (0.0291)
Panel B.1.1: Functional form log(SAT/ACTs taken +1)			
TV dummy × Hispanic	0.1501*** (0.0191)	0.1501*** (0.0191)	0.1501*** (0.0191)
Panel B.1.2: Functional form log(calculus taken +1)			
TV dummy × Hispanic	0.2413*** (0.0250)	0.2413*** (0.0250)	0.2413*** (0.0251)
Panel B.1.3: Functional form log(APs passed +1)			
TV dummy × Hispanic	0.0931*** (0.0280)	0.0928*** (0.0282)	0.0934*** (0.0284)
Panel B.2.1: Functional form SAT/ACTs taken			
TV dummy × Hispanic	11.07*** (1.566)	11.07*** (1.567)	11.07*** (1.567)
Panel B.2.2: Functional form Calculus taken			
TV dummy × Hispanic	7.192*** (1.544)	7.192*** (1.544)	7.192*** (1.544)
Panel B.2.3: Functional form APs passed			
TV dummy × Hispanic	4.676* (2.550)	4.671* (2.544)	4.710* (2.559)
Panel B.3.1: Functional form Standardized SAT/ACTs taken			
TV dummy × Hispanic	0.1559*** (0.0221)	0.1559*** (0.0221)	0.1559*** (0.0221)
Panel B.3.2: Functional form Standardized calculus taken			

TV dummy × Hispanic	0.1662*** (0.0357)	0.1662*** (0.0357)	0.1662*** (0.0357)
Panel B.3.3: Functional form Standardized APs passed			
TV dummy × Hispanic	0.0624* (0.0340)	0.0623* (0.0339)	0.0628* (0.0341)
Panel B.4.1: Functional form Poisson SAT/ACTs taken			
TV dummy × Hispanic	0.0426*** (0.0104)	0.0426*** (0.0104)	0.0426*** (0.0104)
Panel B.4.2: Functional form Poisson calculus taken			
TV dummy × Hispanic	0.0747*** (0.0133)	0.0747*** (0.0133)	0.0747*** (0.0133)
Panel B.4.3: Functional form Poisson APs passed			
TV dummy × Hispanic	0.0228*** (0.0067)	0.0229*** (0.0068)	0.0231*** (0.0068)
Panel C.1.1: Weight by school size IHS(SAT/ACTs taken)			
TV dummy × Hispanic	0.2379*** (0.0311)	0.2379*** (0.0311)	0.2379*** (0.0311)
Panel C.1.2: Weight by school size IHS(calculus taken)			
TV dummy × Hispanic	0.2615*** (0.0312)	0.2615*** (0.0312)	0.2615*** (0.0312)
Panel C.1.3: Weight by school size IHS(APs passed)			
TV dummy × Hispanic	0.1097*** (0.0328)	0.1093*** (0.0329)	0.1106*** (0.0333)
Panel C.2.1: Weight by school-demographic size IHS(SAT/ACTs taken)			
TV dummy × Hispanic	0.0772** (0.0390)	0.0765* (0.0398)	0.0784** (0.0395)

Panel C.2.2: Weight by school-demographic size			
IHS(calculus taken)			
TV dummy × Hispanic	0.0736*	0.0739*	0.0787*
	(0.0410)	(0.0412)	(0.0411)
Panel C.2.3: Weight by school-demographic size			
IHS(APs passed)			
TV dummy × Hispanic	0.0641	0.0631	0.0647
	(0.0397)	(0.0399)	(0.0403)
Panel C.3.1: Add school fixed effects			
IHS(SAT/ACTs taken)			
TV dummy × Hispanic	0.1598***	0.1598***	0.1598***
	(0.0210)	(0.0210)	(0.0210)
Panel C.3.2: Add school fixed effects			
IHS(calculus taken)			
TV dummy × Hispanic	0.2718***	0.2718***	0.2718***
	(0.0277)	(0.0277)	(0.0277)
Panel C.3.3: Add school fixed effects			
IHS(APs passed)			
TV dummy × Hispanic	0.1024***	0.1024***	0.1024***
	(0.0325)	(0.0325)	(0.0325)
Panel D.1.1: Drop bilingual stations			
IHS(SAT/ACTs taken)			
TV dummy × Hispanic	0.1653***	0.1653***	0.1653***
	(0.0234)	(0.0234)	(0.0234)
Panel D.1.2: Drop bilingual stations			
IHS(calculus taken)			
TV dummy × Hispanic	0.2826***	0.2826***	0.2826***
	(0.0300)	(0.0300)	(0.0300)
Panel D.1.3: Drop bilingual stations			
IHS(APs passed)			
TV dummy × Hispanic	0.1134***	0.1137***	0.1152***
	(0.0302)	(0.0303)	(0.0306)
Panel E.1.1: Control station characteristics			
IHS(SAT/ACTs taken)			

TV dummy × Hispanic	0.1598*** (0.0210)	0.1598*** (0.0210)	0.1598*** (0.0210)
Panel E.1.2: Control station characteristics IHS(calculus taken)			
TV dummy × Hispanic	0.2718*** (0.0277)	0.2718*** (0.0277)	0.2718*** (0.0277)
Panel E.1.3: Control station characteristics IHS(APs passed)			
TV dummy × Hispanic	0.0964*** (0.0288)	0.0966*** (0.0290)	0.0972*** (0.0293)
Panel E.2.1: Drop stations built after 1997 IHS(SAT/ACTs taken)			
TV dummy × Hispanic	0.1706*** (0.0219)	0.1706*** (0.0219)	0.1706*** (0.0219)
Panel E.2.2: Drop stations built after 1997 IHS(calculus taken)			
TV dummy × Hispanic	0.2803*** (0.0281)	0.2803*** (0.0281)	0.2803*** (0.0281)
Panel E.2.3: Drop stations built after 1997 IHS(APs passed)			
TV dummy × Hispanic	0.1020*** (0.0293)	0.1020*** (0.0294)	0.1025*** (0.0296)
Panel F.1.1: Correcting for spatial autocorrelation, arbitrary spatial clusters — IHS(SAT/ACTs taken)			
TV dummy × Hispanic	0.160*** (0.034)	0.160*** (0.034)	0.160*** (0.034)
Panel F.1.2: Correcting for spatial autocorrelation, arbitrary spatial clusters — IHS(calculus taken)			
TV dummy × Hispanic	0.272*** (0.054)	0.272*** (0.054)	0.272*** (0.054)
Panel F.1.3: Correcting for spatial autocorrelation, arbitrary spatial clusters — IHS(APs passed)			
TV dummy × Hispanic	0.096*** (0.041)	0.097*** (0.041)	0.097*** (0.042)

Panel F.2.1: Correcting for spatial autocorrelation, Bartlett kernel IHS(SAT/ACTs taken)			
TV dummy × Hispanic	0.160*** (0.030)	0.160*** (0.030)	0.160*** (0.030)
Panel F.2.2: Correcting for spatial autocorrelation, Bartlett kernel IHS(calculus taken)			
TV dummy × Hispanic	0.272*** (0.043)	0.272*** (0.043)	0.272*** (0.043)
Panel F.2.3: Correcting for spatial autocorrelation, Bartlett kernel IHS(APs passed)			
TV dummy × Hispanic	0.096*** (0.037)	0.097*** (0.037)	0.097*** (0.038)
Panel F.3.1: Two-way cluster, school district and TV network level IHS(SAT/ACTs taken)			
TV dummy × Hispanic	0.1598*** (0.0146)	0.1598*** (0.0146)	0.1598*** (0.0146)
Panel F.3.2: Two-way cluster, school district and TV network level IHS(calculus taken)			
TV dummy × Hispanic	0.2718*** (0.0211)	0.2718*** (0.0211)	0.2718*** (0.0211)
Panel F.3.3: Two-way cluster, school district and TV network level IHS(APs passed)			
TV dummy × Hispanic	0.0964** (0.0190)	0.0966** (0.0197)	0.0972** (0.0198)
Panel F.4.1: Clustering at the TV station level IHS(SAT/ACTs taken)			
TV dummy × Hispanic	0.1598*** (0.0377)	0.1598*** (0.0377)	0.1598*** (0.0377)
Panel F.4.2: Clustering at the TV station level IHS(calculus taken)			
TV dummy × Hispanic	0.2718*** (0.0407)	0.2718*** (0.0408)	0.2718*** (0.0408)
Panel F.4.3: Clustering at the TV station level IHS(APs passed)			

TV dummy \times Hispanic	0.0964** (0.0348)	0.0966** (0.0354)	0.0972** (0.0359)
Panel F.5.1: Robust errors IHS(SAT/ACTs taken)			
TV dummy \times Hispanic	0.1598*** (0.0210)	0.1598*** (0.0210)	0.1598*** (0.0210)
Panel F.5.2: Robust errors IHS(calculus taken)			
TV dummy \times Hispanic	0.2718*** (0.0277)	0.2718*** (0.0277)	0.2718*** (0.0277)
Panel F.5.3: Robust errors IHS(APs passed)			
TV dummy \times Hispanic	0.0964** (0.0288)	0.0966** (0.0289)	0.0972** (0.0291)
Panel G.1.1: Comparing Hispanic and white students IHS(SAT/ACTs taken)			
TV dummy \times Hispanic	0.4360*** (0.0353)	0.4360*** (0.0353)	0.4360*** (0.0353)
Panel G.1.2: Comparing Hispanic and white students IHS(calculus taken)			
TV dummy \times Hispanic	0.5322*** (0.0336)	0.5322*** (0.0336)	0.5322*** (0.0336)
Panel G.1.3: Comparing Hispanic and white students IHS(APs passed)			
TV dummy \times Hispanic	0.2505*** (0.0333)	0.2561*** (0.0333)	0.2565*** (0.0337)
School district FE	Yes	Yes	Yes
# Hispanic, Asian students	Yes	Yes	Yes
School size controls	No	Yes	Yes
School type controls	No	No	Yes

The table presents coefficient estimates from regressions at the school-ethnicity level, only keeping schools within 100 KM of a Spanish language TV contour boundary. The dependent variables are inverse hyperbolic sine transformed counts of the number of students taking the SAT or ACT in Panels X.X.1, the number of students enrolled in calculus in Panels X.X.2, and the number of Advanced Placement tests passed in Panels X.X.3. TV dummy is an indicator variable for a school with access to Spanish language television, which is interacted with an indicator for whether the demographic is Hispanic (the omitted group is Asians). Panel A.1 replicates the baseline specification in Table 3. Panel A.2 reduces the sample to only schools within 50 KM of the contour boundary, Panel A.3 reduces the sample to only schools within 33 KM of the contour boundary, Panel A.4 reduces the sample to only schools within 10 KM of the contour boundary, Panel A.5 reduces the sample to only schools between 25 and 100 KM of the contour boundary, and Panel A.6 adds controls for distance and distance². Panel B.1 changes the functional form from $IHS(x)$ to $\log(x + 1)$, Panel B.2 changes the functional form to the variable count, and Panel B.3 changes the functional form to the standardized count. Panel B.4 uses a Poisson estimator. Panel C.1 weights each observation by the number of students enrolled in the school, Panel C.2 weights each observation by the number of students in the observation's demographic category in the school, and Panel C.3 adds school fixed effects. Panel D.1 drops stations that broadcast in both English and Spanish. Panel E.1 controls for characteristics of the nearest SLTV station, including its antenna's effective radiated power, height above average terrain, radiation center above mean sea level, and the presence of a directional antenna, while Panel E.2 drops observations where the nearest SLTV station was built after 1997. Panel F.1 accounts for spatial autocorrelation by allowing for arbitrary spatial clusters for observations within 100 KM of one another, Panel F.2 accounts for spatial autocorrelation by imposing a linear decay (Bartlett kernel) on the correlation structure for observations within 100 KM of one another, Panel F.3 two-way clusters standard errors by school district and parent TV network, Panel F.4 clusters standard errors at the TV station level, and Panel F.5 uses heteroskedasticity robust standard errors. Panel G.1 changes the omitted demographic category from Asian students to white students. Columns 1-3 control for the number of Hispanic and Asian students enrolled. Columns 2-3 control for the number of teachers and total number of students at the school. Column 3 controls for indicators denoting whether the school contains a primary, middle, and high school division. School district fixed effects are always included. Except where otherwise noted, standard errors are clustered at the school district level. *, **, and *** denote statistical significance at the 10%, 5%, and 1% levels, respectively.

Table A.7: Effect of Spanish language TV on Hispanic student retention

	(1)	(2)	(3)
Panel A: IHS(Hispanic students retained)			
TV dummy	-0.0251 (0.0155)	-0.0211 (0.0152)	-0.0216 (0.0151)
N	5,968	5,968	5,968
County controls	Yes	Yes	Yes
School size controls	No	Yes	Yes
School type controls	No	No	Yes

Notes: The table presents coefficient estimates from regressions at the school level, only keeping schools within 100 KM of a Spanish language TV contour boundary. The dependent variable is the inverse hyperbolic sine transformed count of the number of high school Hispanic students retained from the prior year. TV dummy is an indicator variable for a school with access to Spanish language television. Columns 1-3 include county level controls for log(income), log(population), and percentage of the county that is Hispanic, as well as school level controls for the number of Hispanic and Asian students enrolled. Columns 2-3 control for the number of teachers and total number of students at the school. Column 3 controls for indicators denoting whether the school contains a primary, middle, and high school division. Standard errors are clustered at the school district level. *, **, and *** denote statistical significance at the 10%, 5%, and 1% levels, respectively.

Table A.8: Effect of Spanish language TV on Hispanic vs. Asian, placebo identity outcomes

	(1)	(2)	(3)
Panel A: IHS(IDEA (disability) students)			
TV dummy \times Hispanic	0.0318 (0.0338)	0.0325 (0.0339)	0.0318 (0.0338)
N	81,622	81,622	81,622
Panel B: IHS(bullied based on sex)			
TV dummy \times Hispanic	0.0090 (0.0056)	0.0088 (0.0055)	0.0088 (0.0055)
N	22,168	22,168	22,168
School district FE	Yes	Yes	Yes
# Hispanic, Asian students	Yes	Yes	Yes
School size controls	No	Yes	Yes
School type controls	No	No	Yes

Notes: The table presents coefficient estimates from regressions at the school-ethnicity level, only keeping schools within 100 KM of a Spanish language TV contour boundary. The dependent variable are inverse hyperbolic sine transformed counts of students classified under IDEA (students with disabilities) in Panel A and the number of students bullied on the basis of their sex in Panel B. TV dummy is an indicator variable for a school with access to Spanish language television, which is interacted with an indicator for whether the demographic is Hispanic (the omitted group are Asians). Columns 1-3 control for the number of Hispanic and Asian students enrolled. Columns 2-3 control for the number of teachers and total number of students at the school. Column 3 controls for indicators denoting whether the school contains a primary, middle, and high school division. School district fixed effects are always included. Standard errors are clustered at the school district level. *, **, and *** denote statistical significance at the 10%, 5%, and 1% levels, respectively.

Table A.9: Effect of Spanish language TV on Hispanic identity outcomes

	(1)	(2)	(3)
Panel A: IHS(limited English proficiency)			
TV dummy	0.126*** (0.006)	0.127*** (0.006)	0.116*** (0.005)
N	41,502	41,502	41,502
Panel B: IHS(bullied based on ethnicity)			
TV dummy	0.002*** (0.001)	0.002*** (0.001)	0.003*** (0.001)
N	40,811	40,811	40,811
County controls	Yes	Yes	Yes
# Hispanic, Asian students	Yes	Yes	Yes
School size controls	No	Yes	Yes
School type controls	No	No	Yes

Notes: The table presents coefficient estimates from regressions at the school level, only keeping schools within 100 KM of a Spanish language TV contour boundary. The dependent variable are inverse hyperbolic sine transformed counts of Hispanic students classified as having limited English proficiency in Panel A and the number of Hispanic students bullied on the basis of their ethnicity or race in Panel B. TV dummy is an indicator variable for a school with access to Spanish language television, which is interacted with an indicator for whether the demographic is Hispanic (the omitted group are Asians). Columns 1-3 include county level controls for log(income), log(population), and percentage of the county that is Hispanic, as well as school level controls for the number of Hispanic and Asian students enrolled. Columns 2-3 control for the number of teachers and total number of students at the school. Column 3 controls for indicators denoting whether the school contains a primary, middle, and high school division. Standard errors are clustered at the school district level. *, **, and *** denote statistical significance at the 10%, 5%, and 1% levels, respectively.

Table A.10: Effect of Spanish language TV by program content on Hispanic academic achievement

	(1)	(2)	(3)
Panel A: IHS(SAT/ACTs taken)			
TV × % programs on identity	2.054*** (0.678)		
TV × % programs on education		1.116** (0.453)	
TV × % programs with role models			1.601 (1.259)
N	13,480	13,480	13,480
Panel B: IHS(calculus taken)			
TV × % programs on identity	0.581 (0.787)		
TV × % programs on education		-0.709 (0.502)	
TV × % programs with role models			-3.098* (1.583)
N	7,112	7,112	7,112
Panel C: IHS(APs passed)			
TV × % programs on identity	5.475*** (1.079)		
TV × % programs on education		-0.132 (0.666)	
TV × % programs with role models			-0.554 (2.384)
N	3,168	3,168	3,168
County controls	Yes	Yes	Yes
# Hispanic, Asian students	Yes	Yes	Yes
School size controls	No	Yes	Yes
School type controls	No	No	Yes

Notes: The table presents coefficient estimates from regressions at the school level, only keeping schools within 100 KM of a Spanish language TV contour boundary. The dependent variable are inverse hyperbolic sine transformed counts of the number of Hispanic students taking the SAT or ACT in Panel A, the number of Hispanic students enrolled in calculus in Panel B, and the number of Advanced Placement tests passed by Hispanic students in Panel C. % programs on identity, education, and role models are coded based on TV channel network transcripts. TV dummy is an indicator variable for a school with access to Spanish language television, which is interacted with the % of programs on identity, education, and role models. Columns 1-3 include county level controls for log(income), log(population), and percentage of the county that is Hispanic, as well as school level controls for the number of Hispanic and Asian students enrolled. Columns 2-3 control for the number of teachers and total number of students at the school. Column 3 controls for indicators denoting whether the school contains a primary, middle, and high school division. Standard errors are clustered at the school district level. *, **, and *** denote statistical significance at the 10%, 5%, and 1% levels, respectively.

Table A.11: Effect of TV contour regulation on time spent on child's education by ethnicity

	<i>Minutes spent on child's education</i>			
	(1)	(2)	(3)	(4)
<hr/> Panel A: Total TV watched <hr/>				
TV dummy \times Hispanic	0.060 (0.334)	0.105 (0.340)	0.178 (0.330)	0.179 (0.328)
TV dummy	0.194 (0.205)	0.164 (0.208)	0.205 (0.224)	0.202 (0.225)
Indiv. demographic	Yes	Yes	Yes	Yes
County log(income)	Yes	Yes	Yes	Yes
County % Hispanic	No	Yes	Yes	Yes
County log(pop.)	No	No	Yes	Yes
Foreign born \times Hispanic	No	No	No	Yes

Notes: The table presents coefficient estimates from regressions at the individual level, only keeping those living in a county within 100 KM of a Spanish language TV contour boundary. The dependent variable is the number of minutes spent on household children's education (e.g. helping with homework or talking with teachers). TV dummy is an indicator variable for a person living in a county with access to Spanish language television based on the FCC regulation OET Bulletin 69, which is interacted with an indicator for whether the individual is Hispanic. Columns 1-4 include demographic controls for sex, age, and age squared, as well as the mean log(income) of the county. Columns 2-4 control for the percentage of the county that is Hispanic. Columns 3-4 control for the county's log(population). Column 4 controls for whether the individual is foreign born interacted with a Hispanic dummy. Standard errors are robust. *, **, and *** denote statistical significance at the 10%, 5%, and 1% levels, respectively.

Table A.12: Effect of Spanish language TV on Hispanic foot traffic

	<i>IHS(visitors to location)</i>			
	(1)	(2)	(3)	(4)
Panel A.1: Restaurants — Hispanic dummy				
TV × Hispanic food	0.829*** (0.151)	0.829*** (0.151)	0.829*** (0.151)	0.829*** (0.151)
Panel A.2: Restaurants — Japanese dummy				
TV × Japanese food	0.084 (0.183)	0.084 (0.183)	0.084 (0.183)	0.084 (0.184)
Panel A.3: Restaurants — Brazilian dummy				
Hispanic × TV × Brazilian food	0.927*** (0.183)	0.927*** (0.183)	0.927*** (0.183)	0.927*** (0.184)
Panel A.4: Restaurants — Cajun and Creole dummy				
TV × Cajun and Creole food	-0.240 (0.409)	-0.240 (0.409)	-0.240 (0.409)	-0.240 (0.410)
N	101,618	101,618	101,618	101,618
Panel B.1: Recreation — Hispanic dummy				
TV × Hispanic brand	0.885*** (0.327)	0.885*** (0.327)	0.885*** (0.327)	0.885*** (0.327)
Panel B.2: Recreation — Japanese dummy				
TV × Japanese brand	2.360*** (0.409)	2.360*** (0.409)	2.360*** (0.409)	2.360*** (0.409)
Panel B.3: Recreation — Brazilian dummy				
TV × Brazilian brand	0.077 (0.498)	0.077 (0.498)	0.077 (0.498)	0.077 (0.499)
Panel B.4: Recreation — Cajun and Creole dummy				
TV × Cajun and Creole brand	-0.550 (2.051)	-0.550 (2.051)	-0.550 (2.051)	-0.550 (2.053)
N	34,990	34,990	34,990	34,990
County log(income)	Yes	Yes	Yes	Yes
County % Hispanic	No	Yes	Yes	Yes
County log(pop.)	No	No	Yes	Yes
County FE	No	No	No	Yes
NAICS code FE	No	No	No	Yes

Notes: The table presents coefficient estimates from regressions at the establishment-visitor identity level, where a visitor identity is one of 2 categories (TV or not), only keeping locations within 100 KM of a Spanish language TV contour boundary. The dependent variable are inverse hyperbolic sine transformed counts of Hispanic visitors to a given location. Panel A restricts the universe of locations to food service establishments, while Panel B restricts to arts, entertainment, and recreation establishments. TV dummy is an indicator variable for visitors to the location with home access to Spanish language television. Panels A.1 and B.1 interacts this variable with an indicator for Hispanic establishments, Panels A.2 and B.2 interacts this variable with an indicator for Japanese establishments, Panels A.3 and B.3 interacts this variable with an indicator for Brazilian establishments, and Panels A.4 and B.4 interact this variable with an indicator for Cajun and Creole establishments. Columns 1-4 include controls for the mean log(income) of the county. Columns 2-4 control for the percentage of the county that is Hispanic. Columns 3-4 control for the county's log(population). Column 4 adds fixed effects for the county and NAICS code. Standard errors are clustered at the county level. *, **, and *** denote statistical significance at the 10%, 5%, and 1% levels, respectively.

Table A.13: Summary statistics — migration

	<i>All</i>	<i>No SLTV</i>	<i>SLTV</i>
	(1)	(2)	(3)
Panel A: Census migration data (county-county level)			
Origin county, IHS(Hispanic Migrants)	4.391 (1.281)	4.548 (1.336)	4.086 (1.104)
Destination county, IHS(Hispanic Migrants)	4.012 (1.201)	3.992 (1.252)	4.038 (1.132)
Observations	12,551	12,551	12,551

Notes: The table presents means (and standard deviations). Variables in Panel A are data from counties within 100 KM of a coverage contour. Columns 2 and 3 show data for the subsample without and with SLTV coverage, respectively.

Table A.14: Effect of Spanish Language TV on Hispanic vs. non-Hispanic migration between counties — destination sample

	IHS(# Migrants)		
	(1)	(2)	(3)
Panel A: Destination county inside contour			
Origin outside TV contour \times Hispanic	0.0445 (0.2055)	0.0446 (0.2057)	0.0430 (0.2060)
Observations	21,826	21,826	21,826
Panel B: Destination county outside contour			
Origin inside TV contour \times Hispanic	0.0056 (0.2786)	0.0049 (0.2794)	0.0072 (0.2798)
Observations	11,098	11,098	11,098
Destination F.E.	Yes	Yes	Yes
Distance, distance ²	Yes	Yes	Yes
Origin log(pop.)	Yes	Yes	Yes
Origin % Hispanic	No	Yes	Yes
Origin log(income)	No	No	Yes

Notes: The table presents coefficient estimates from regressions at the origin county-destination county-ethnicity level, only keeping destination counties within 100 KM of a contour boundary. The dependent variables are inverse hyperbolic sine transformed counts of migrants from the origin county to the destination county. The key dependent variable of interest is an indicator for whether the origin county has access to SLTV interacted with a Hispanic indicator (the omitted group is non-Hispanic). This is interacted with the distance and distance-squared to the boundary for both the origin and destination county. Columns 1-3 include individual demographic controls for sex, age, and age squared, as well as the mean log(income) of the county. Columns 2-3 control for the percentage of the county that is Hispanic. Column 3 controls for the county's log(population). All regressions also contain destination county fixed effects. Standard errors are two-way clustered by origin and destination county. *, **, and *** denote statistical significance at the 10%, 5%, and 1% levels, respectively.

Table A.15: Effect of Spanish Language TV on Hispanic vs. non-Hispanic migration between counties — origin sample

	IHS(# Migrants)		
	(1)	(2)	(3)
Panel A: Origin county inside contour			
Destination outside TV contour \times Hispanic	-0.1225** (0.0541)	-0.1205** (0.0536)	-0.1210** (0.0537)
Observations	36,060	36,060	36,060
Panel B: Origin county outside contour			
Destination inside TV contour \times Hispanic	-0.1679** (0.0828)	-0.1679** (0.0828)	-0.1682** (0.0828)
Observations	20,692	20,692	20,692
Origin F.E.	Yes	Yes	Yes
Distance, distance ²	Yes	Yes	Yes
Distance log(pop.)	Yes	Yes	Yes
Distance % Hispanic	No	Yes	Yes
Distance log(income)	No	No	Yes

Notes: The table presents coefficient estimates from regressions at the origin county-destination county-ethnicity level, only keeping origin counties within 100 KM of a contour boundary. The dependent variables are inverse hyperbolic sine transformed counts of migrants from the origin county to the destination county. The key dependent variable of interest is an indicator for whether the destination county has access to SLTV interacted with a Hispanic indicator (the omitted group is non-Hispanic). This is interacted with the distance and distance-squared to the boundary for both the origin and destination county. Columns 1-3 include individual demographic controls for sex, age, and age squared, as well as the mean log(income) of the county. Columns 2-3 control for the percentage of the county that is Hispanic. Column 3 controls for the county's log(population). All regressions also contain origin county fixed effects. Standard errors are two-way clustered by origin and destination county. *, **, and *** denote statistical significance at the 10%, 5%, and 1% levels, respectively.

Table A.16: Effect of Spanish Language TV on Hispanic migration between counties — destination sample

	IHS(# Hispanic Migrants)		
	(1)	(2)	(3)
Panel A: Destination county inside contour			
Origin outside TV contour	-0.2305 (0.1920)	-0.2430 (0.1870)	-0.2408 (0.1882)
Observations	4,062	4,062	4,062
Panel B: Destination county outside contour			
Origin inside TV contour	-0.3761 (0.2790)	-0.3486 (0.2900)	-0.3466 (0.2923)
Observations	1,659	1,659	1,659
Destination F.E.	Yes	Yes	Yes
Distance, distance ²	Yes	Yes	Yes
Origin log(pop.)	Yes	Yes	Yes
Origin % Hispanic	No	Yes	Yes
Origin log(income)	No	No	Yes

Notes: The table presents coefficient estimates from regressions at the origin county-destination county level, only keeping destination counties within 100 KM of a contour boundary. The dependent variables are inverse hyperbolic sine transformed counts of Hispanic migrants from the origin county to the destination county. The key dependent variable of interest is an indicator for whether the origin county has access to SLTV. This is interacted with the distance and distance-squared to the boundary for both the origin and destination county. Columns 1-3 include individual demographic controls for sex, age, and age squared, as well as the mean log(income) of the county. Columns 2-3 control for the percentage of the county that is Hispanic. Column 3 controls for the county's log(population). All regressions also contain destination county fixed effects. Standard errors are two-way clustered by origin and destination county. *, **, and *** denote statistical significance at the 10%, 5%, and 1% levels, respectively.

Table A.17: Effect of Spanish Language TV on Hispanic migration between counties — origin sample

	IHS(# Hispanic Migrants)		
	(1)	(2)	(3)
Panel A: Origin county inside contour			
Destination outside TV contour	-0.1491* (0.0784)	-0.1073 (0.0663)	-0.1076 (0.0666)
Observations	8,479	8,479	8,479
Panel B: Origin county outside contour			
Destination inside TV contour	-0.2087 (0.1626)	-0.2121 (0.1645)	-0.2124 (0.1651)
Observations	4,338	4,338	4,338
Origin F.E.	Yes	Yes	Yes
Distance, distance ²	Yes	Yes	Yes
Distance log(pop.)	Yes	Yes	Yes
Distance % Hispanic	No	Yes	Yes
Distance log(income)	No	No	Yes

Notes: The table presents coefficient estimates from regressions at the origin county-destination county level, only keeping origin counties within 100 KM of a contour boundary. The dependent variables are inverse hyperbolic sine transformed counts of Hispanic migrants from the origin county to the destination county. The key dependent variable of interest is an indicator for whether the destination county has access to SLTV. This is interacted with the distance and distance-squared to the boundary for both the origin and destination county. Columns 1-3 include individual demographic controls for sex, age, and age squared, as well as the mean log(income) of the county. Columns 2-3 control for the percentage of the county that is Hispanic. Column 3 controls for the county's log(population). All regressions also contain origin county fixed effects. Standard errors are two-way clustered by origin and destination county. *, **, and *** denote statistical significance at the 10%, 5%, and 1% levels, respectively.